



Doosan Infracore

65.99898-8124

# 부품목록 Parts Book

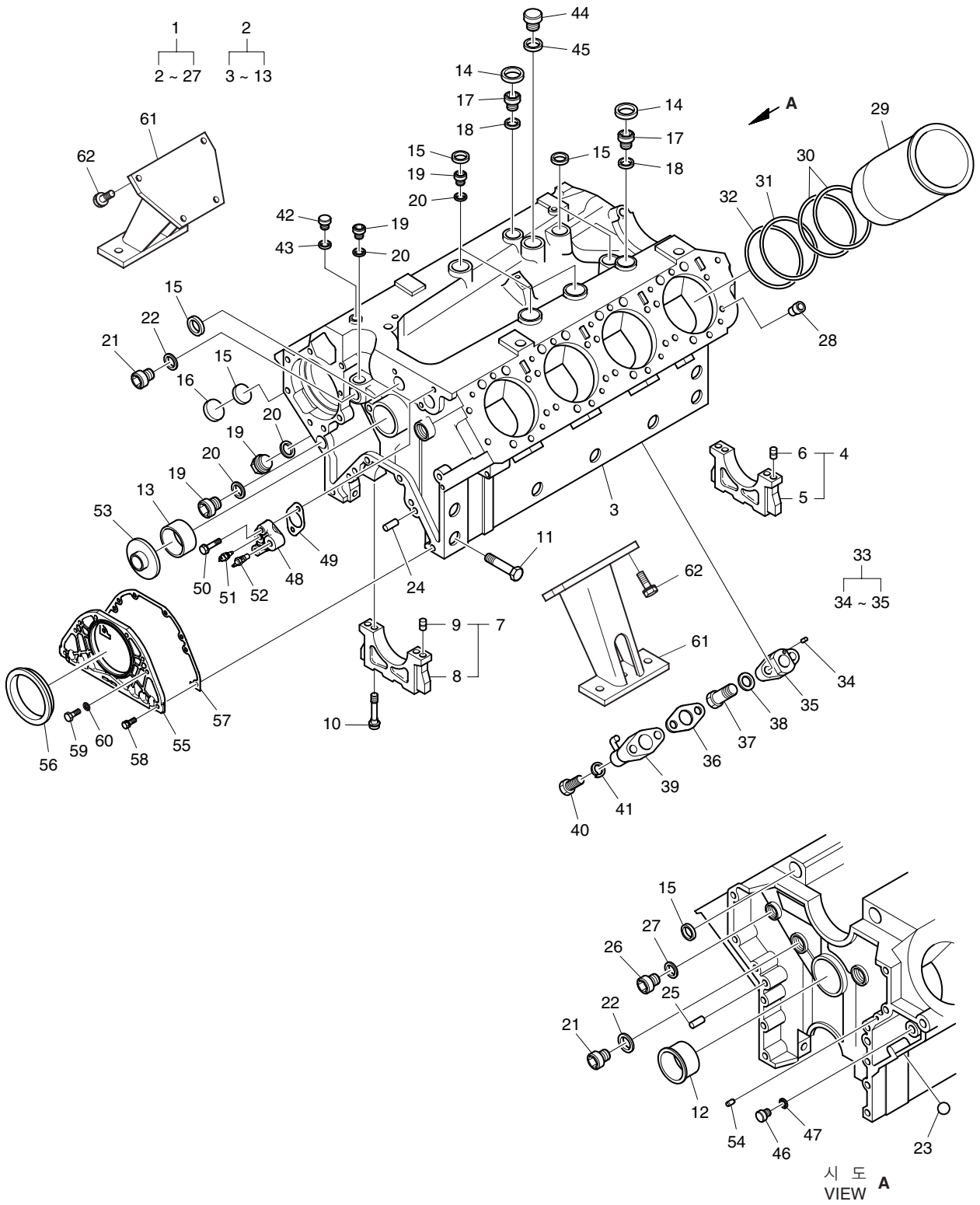
발전기용 엔진  
GENERATOR DIESEL ENGINE

**P158FE**

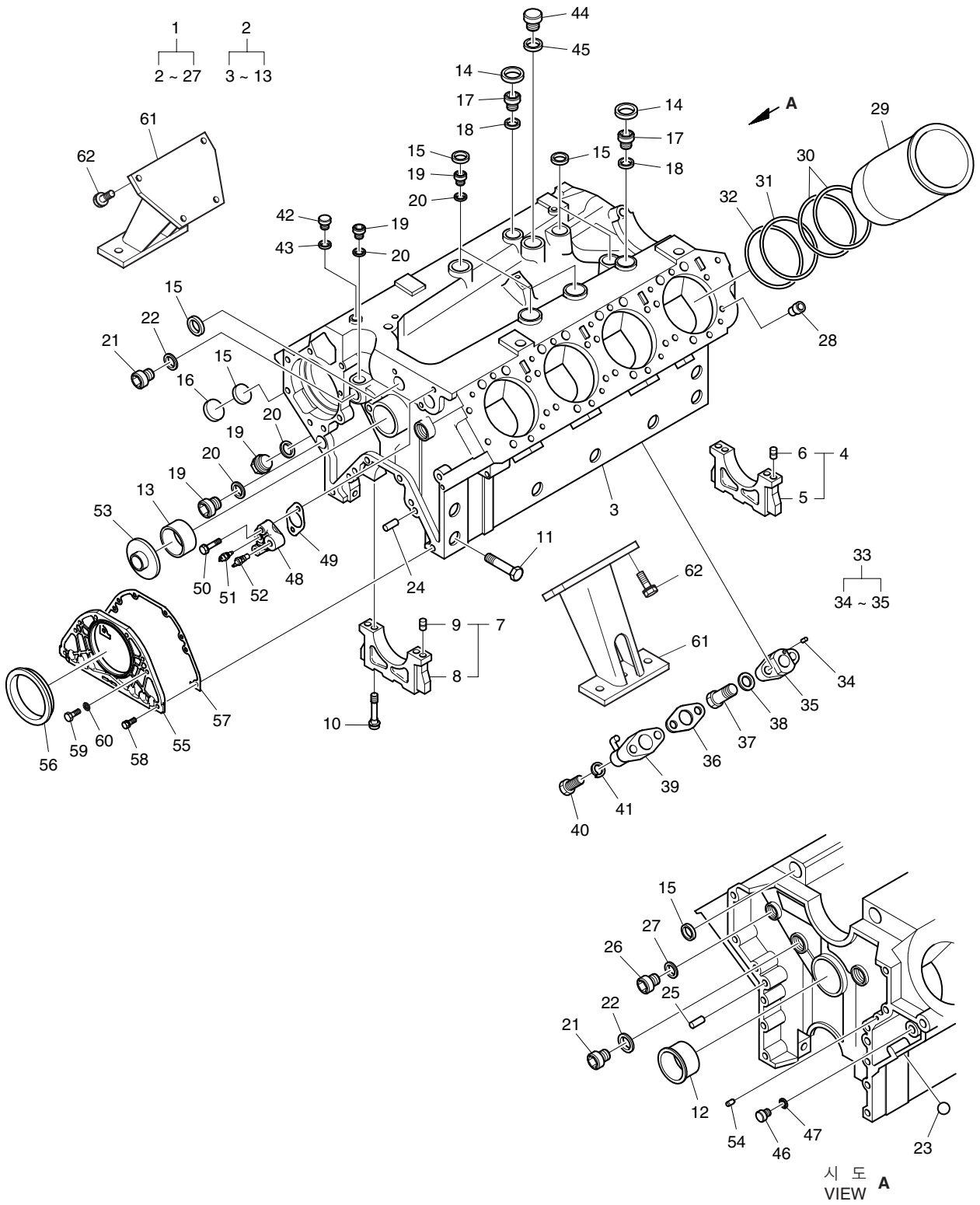
**P180FE**

**P222FE**

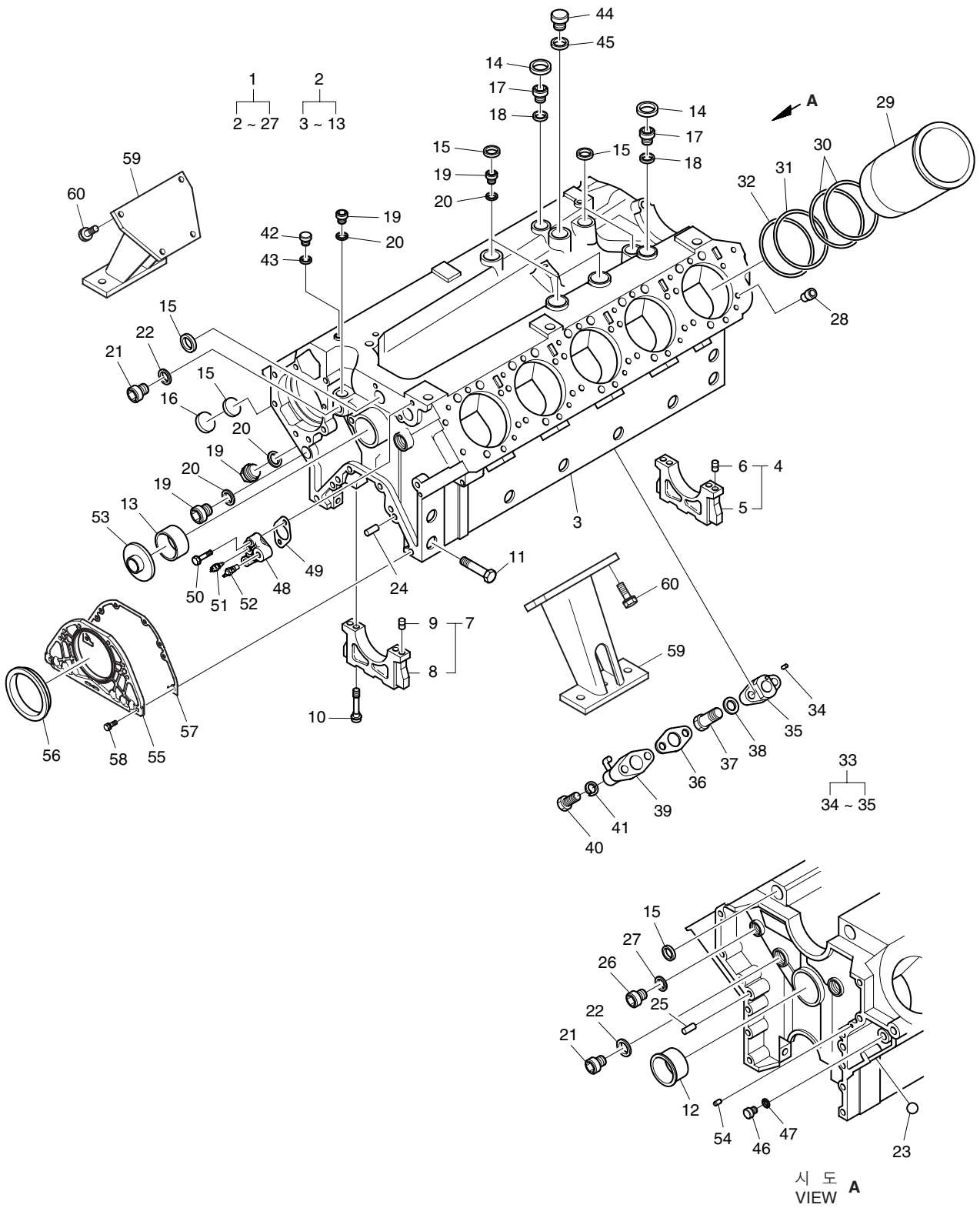
실린더 블록  
Fig.001 CYLINDER BLOCK(1)



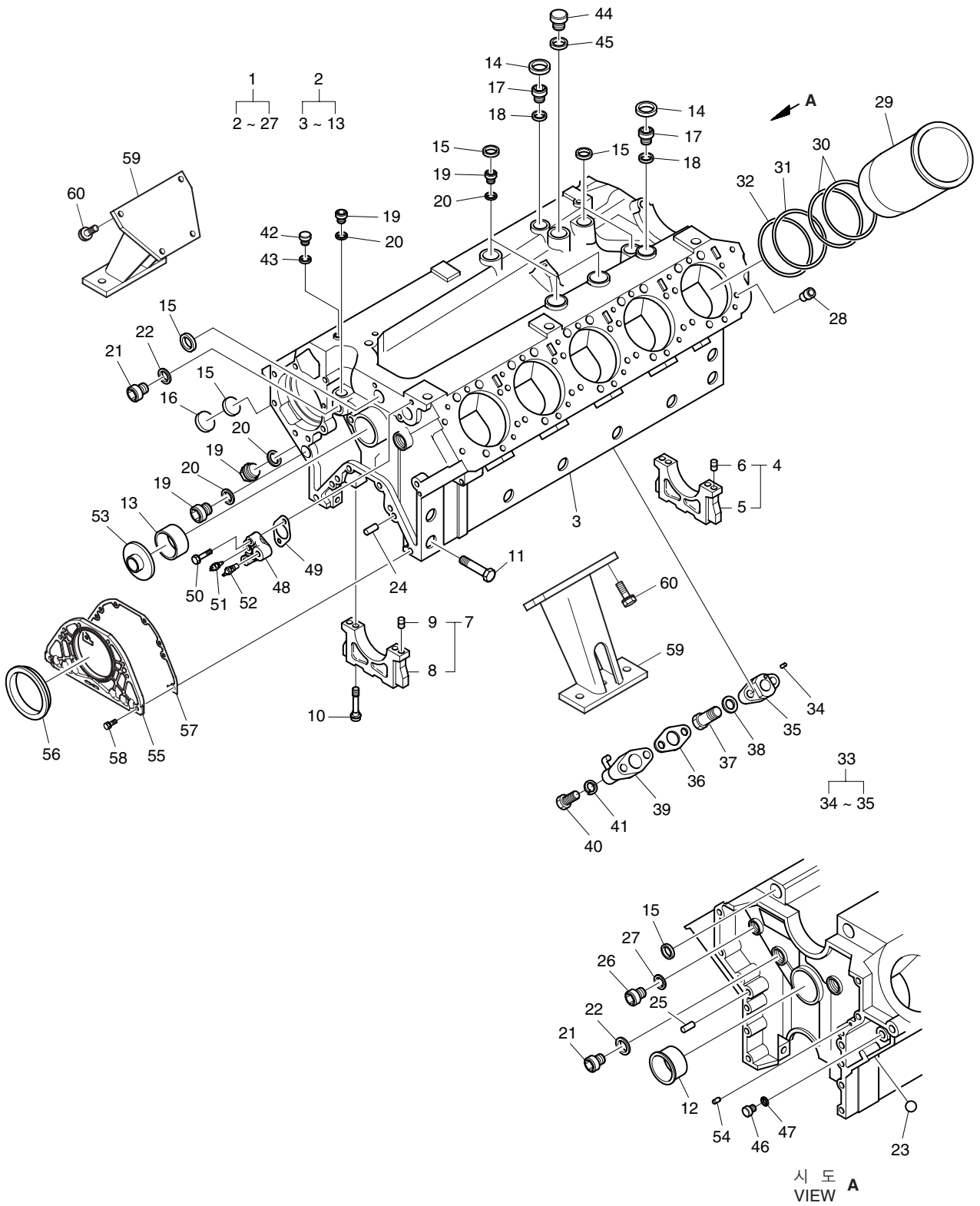
실린더 블록  
Fig.001 CYLINDER BLOCK(1)



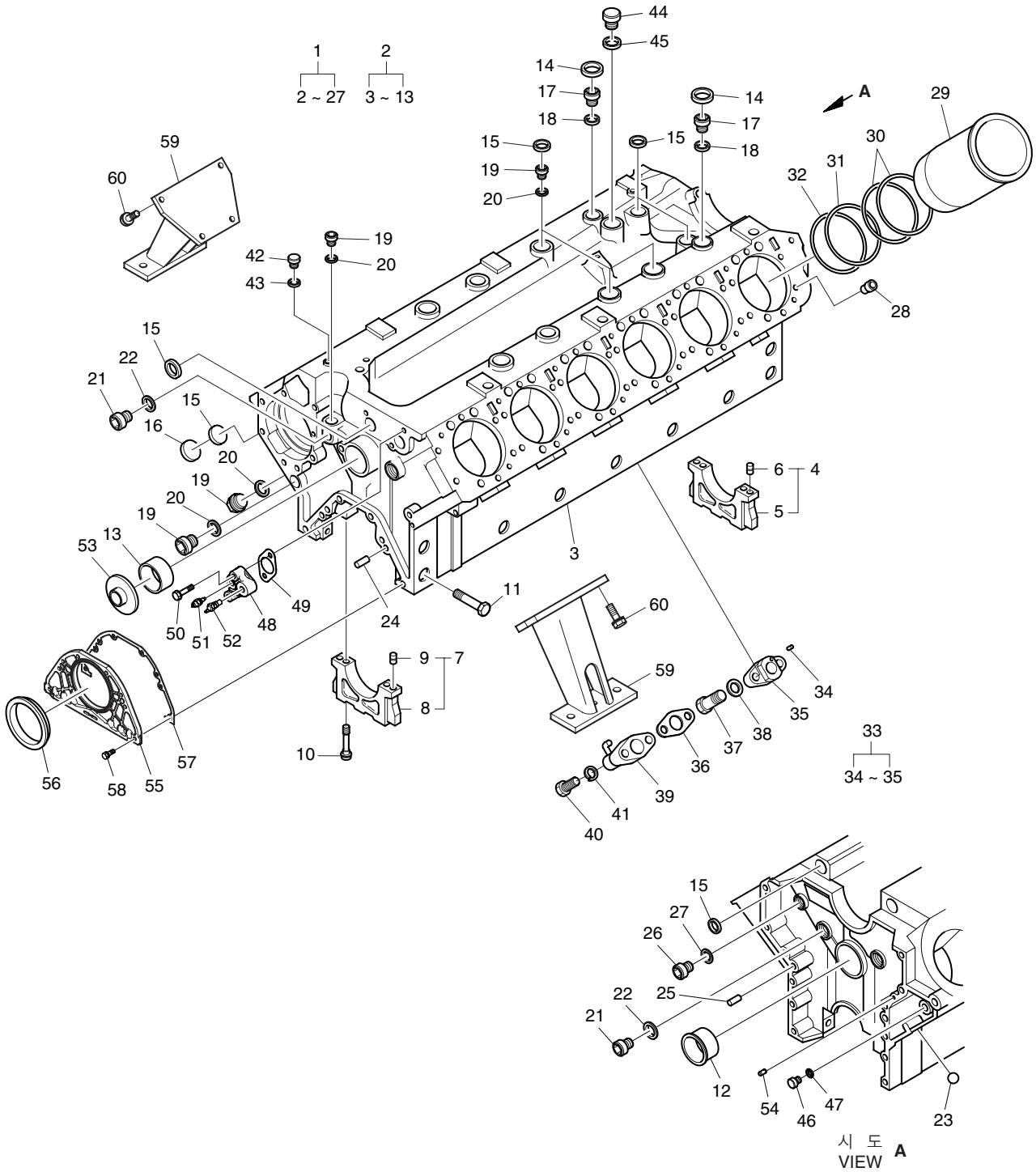
실린더 블록  
Fig.002 CYLINDER BLOCK(2)



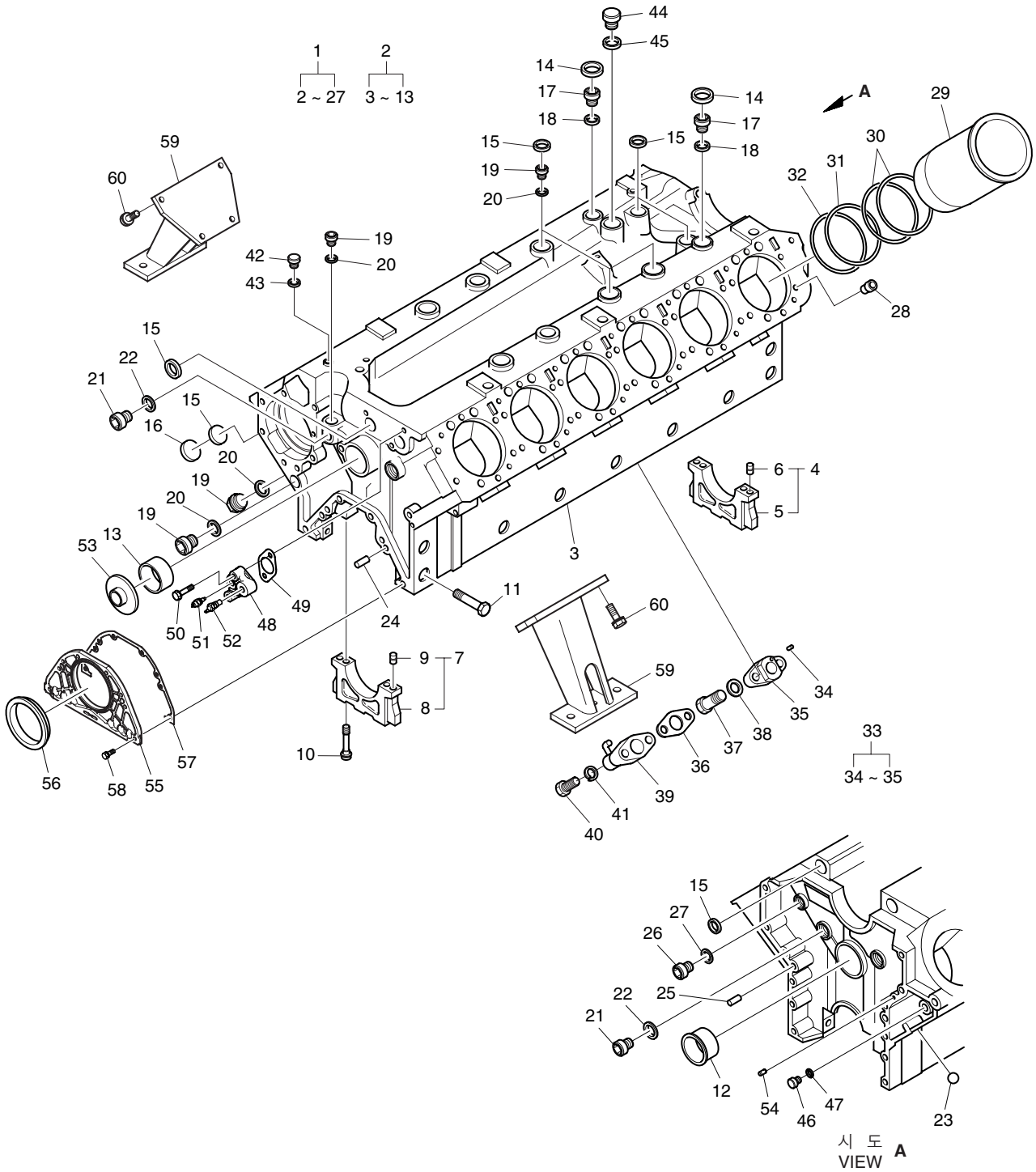
실린더 블록  
Fig.002 CYLINDER BLOCK(2)



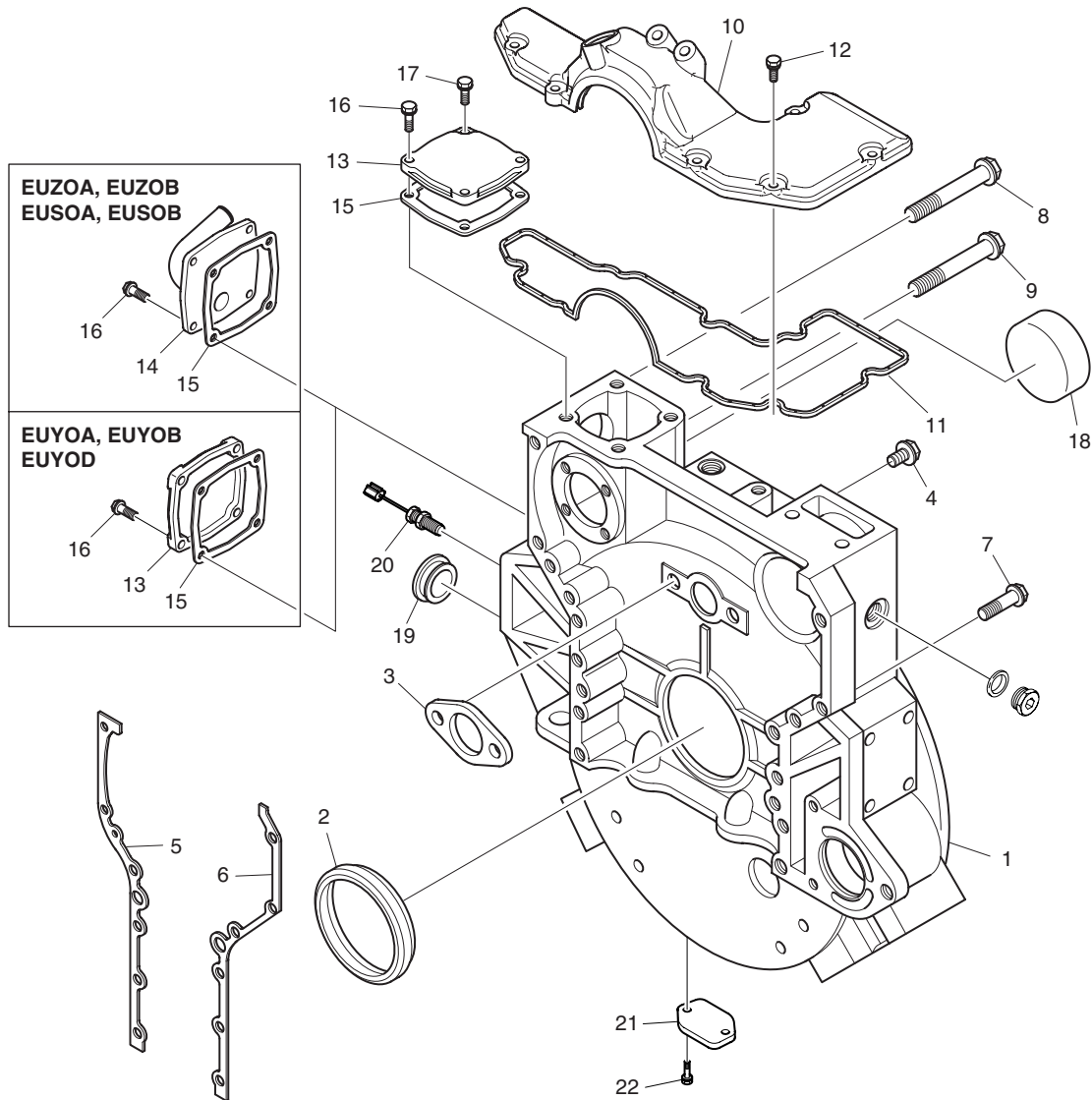
실린더 블록  
Fig.003 CYLINDER BLOCK(3)



실린더 블록  
Fig.003 CYLINDER BLOCK(3)

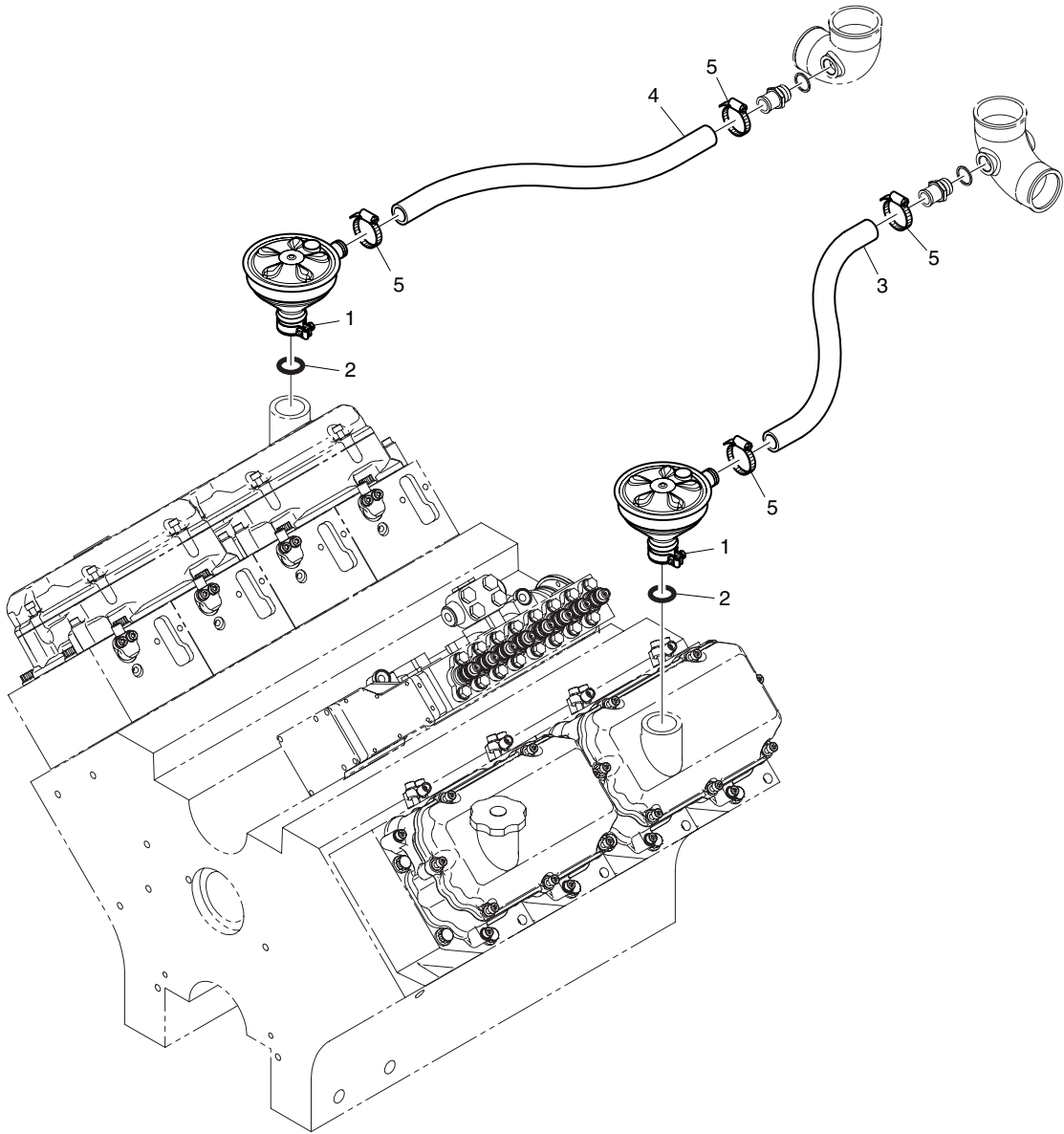


플라이휠 하우징  
Fig.004 FLYWHEEL HOUSING

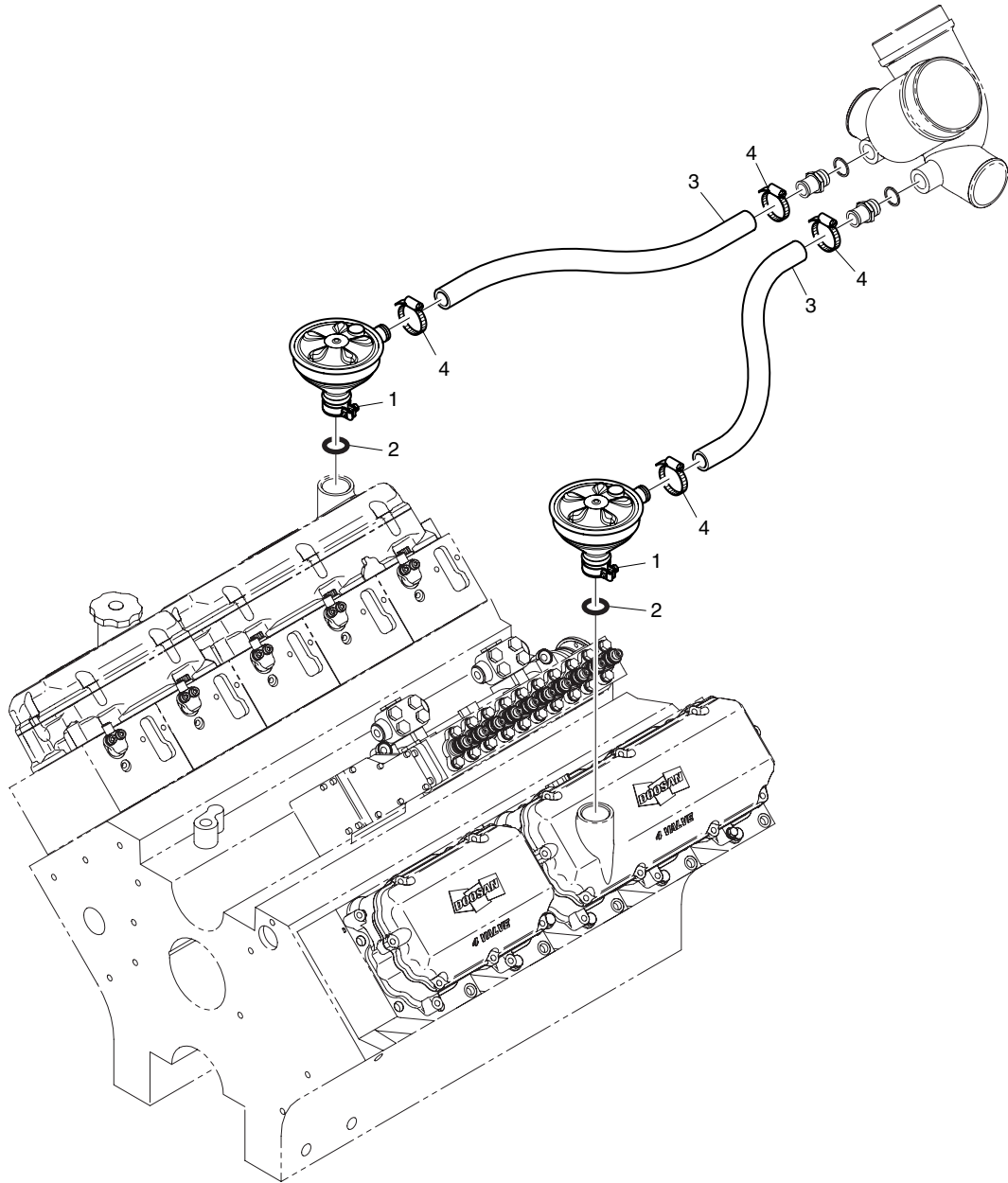




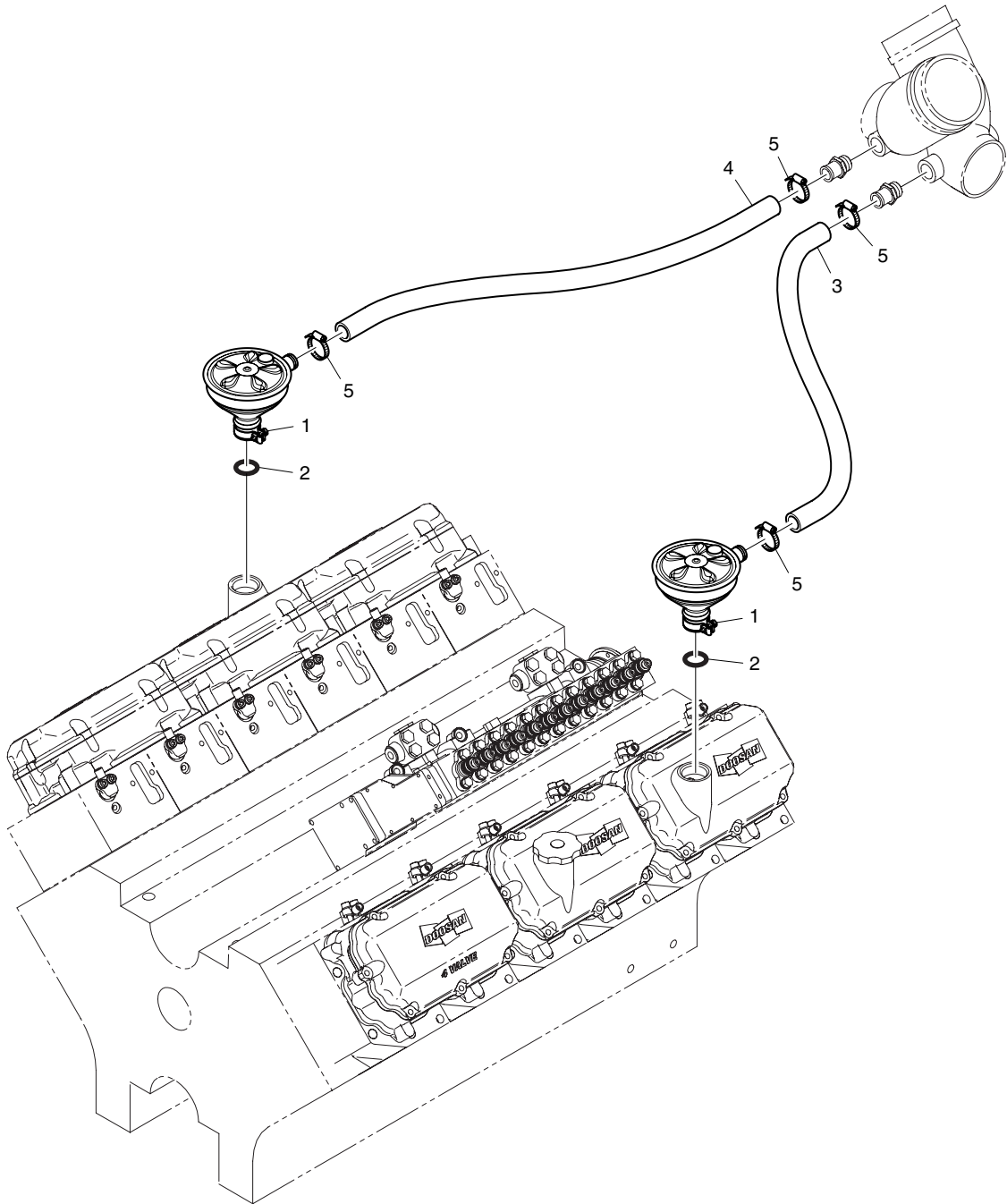
브리더  
Fig.005 BREATHER(1)



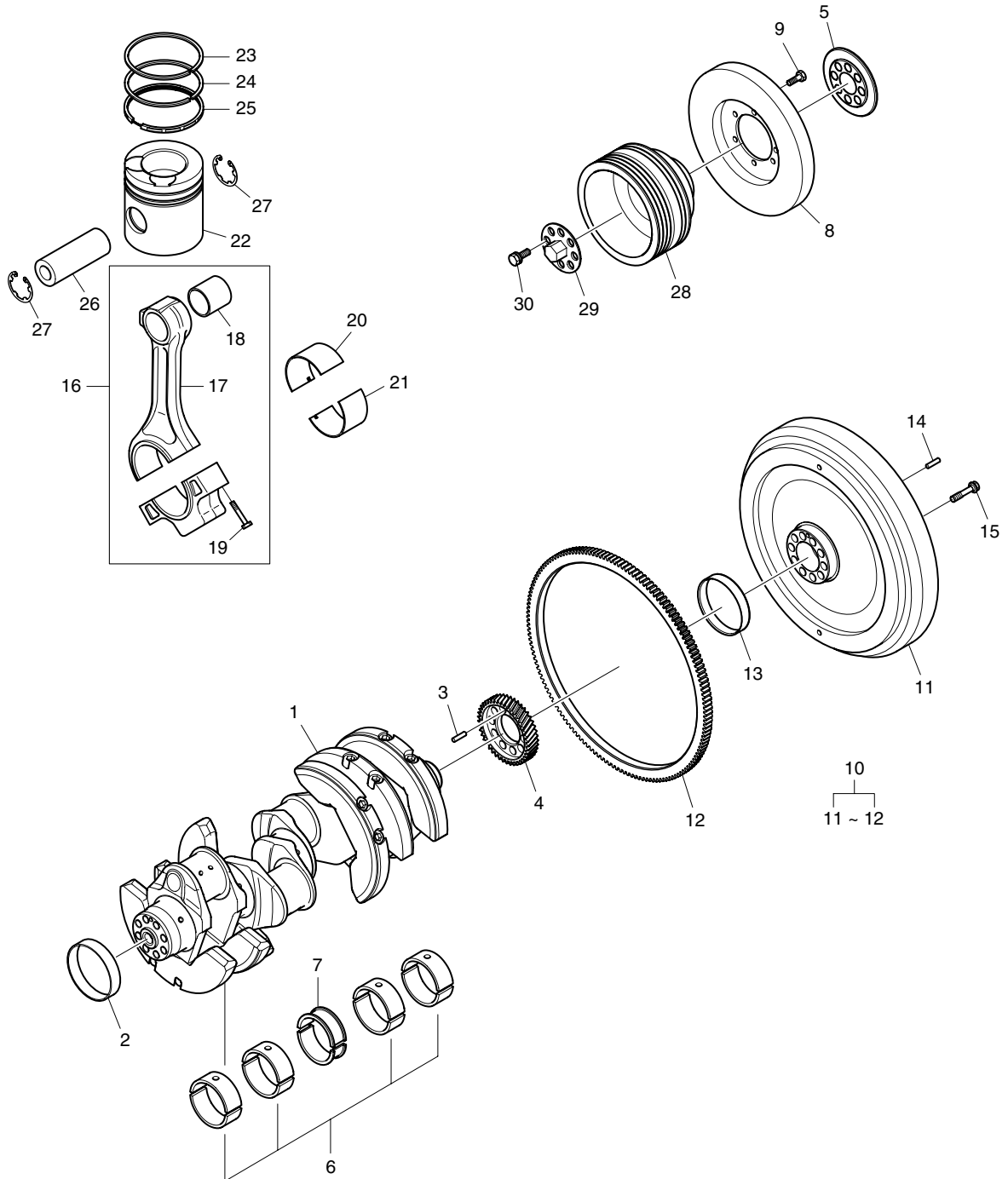
브리더  
Fig.006 BREATHER(2)



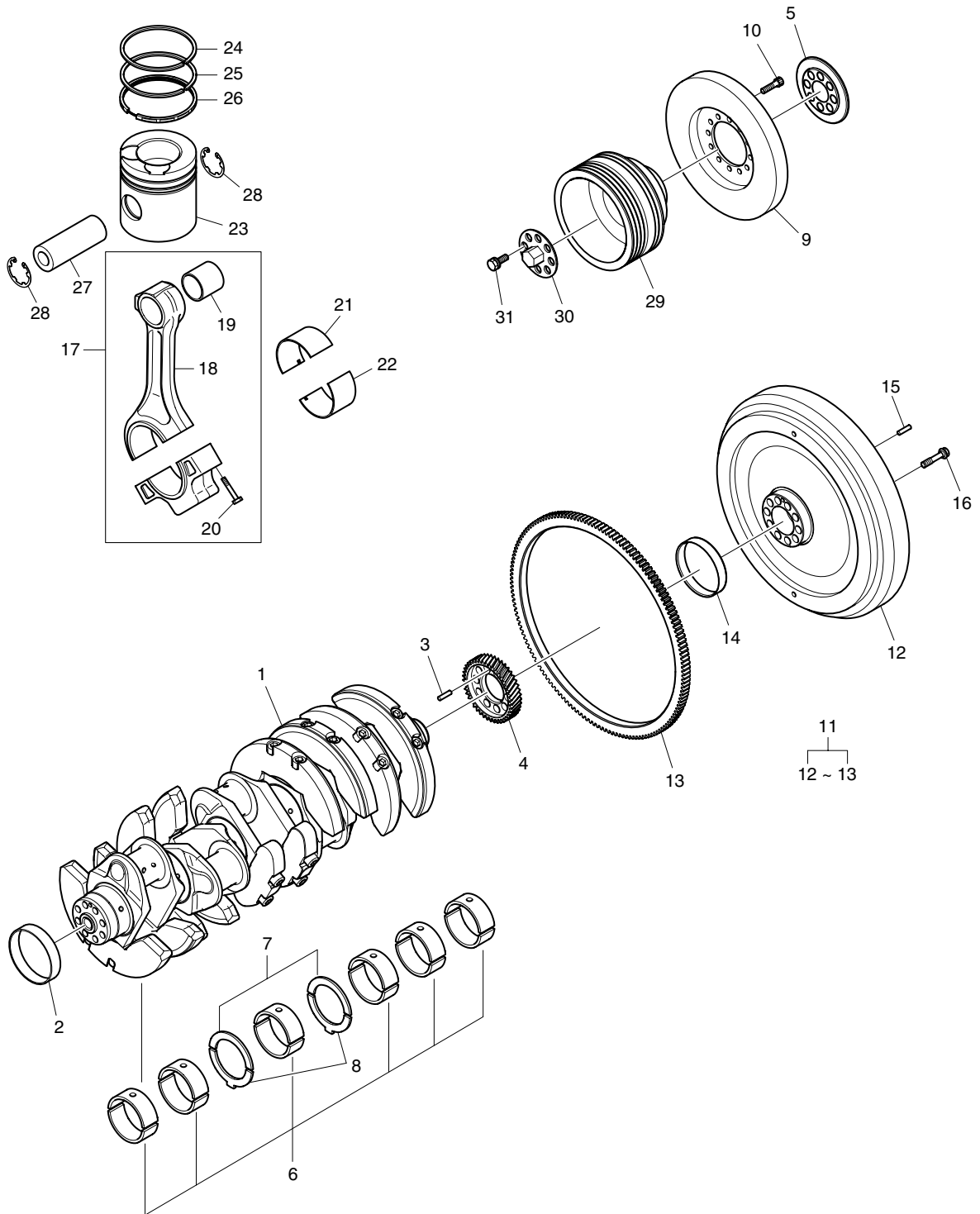
브리더  
Fig.007 BREATHER(3)



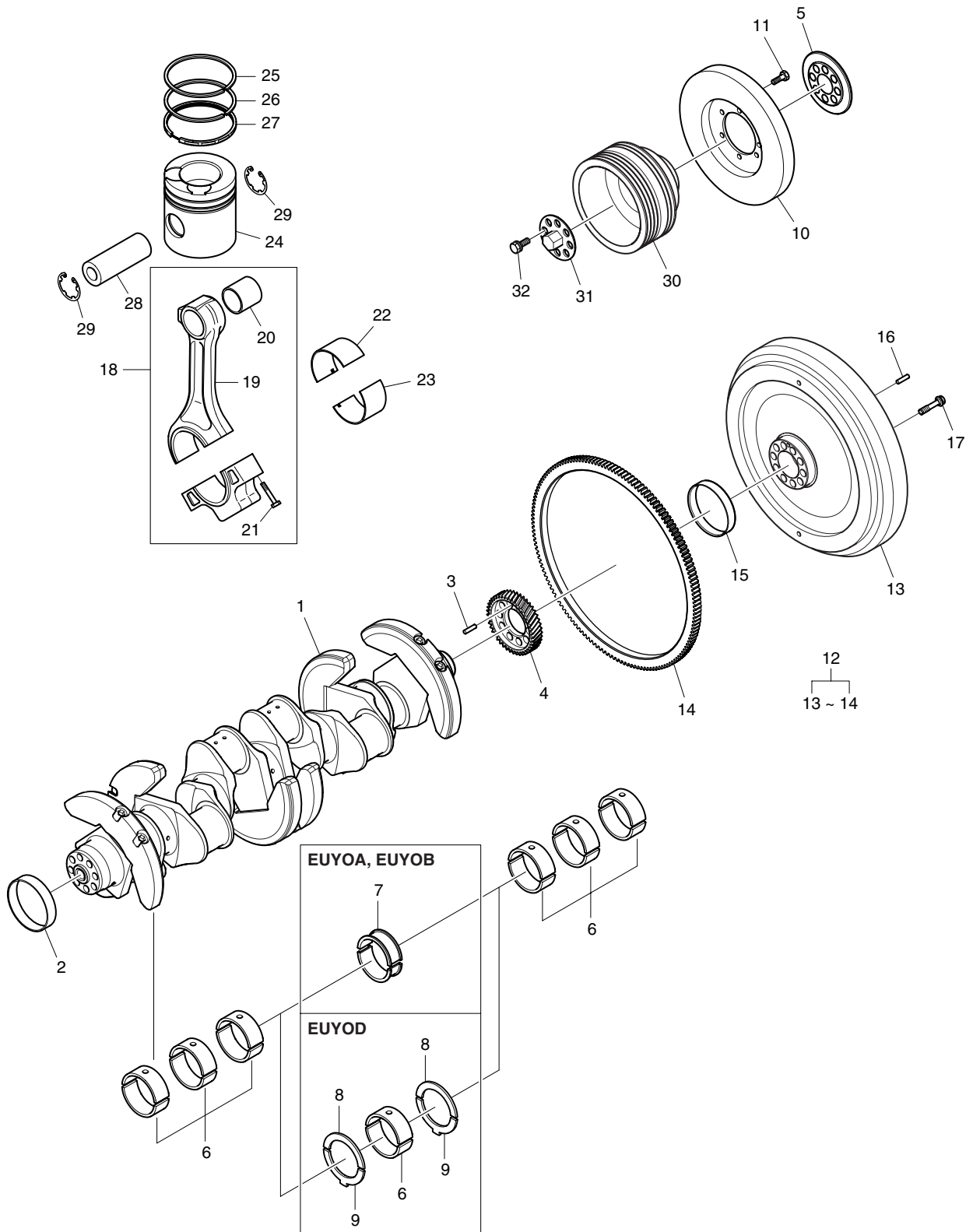
구동 시스템  
Fig.008 DRIVING SYSTEM(1)



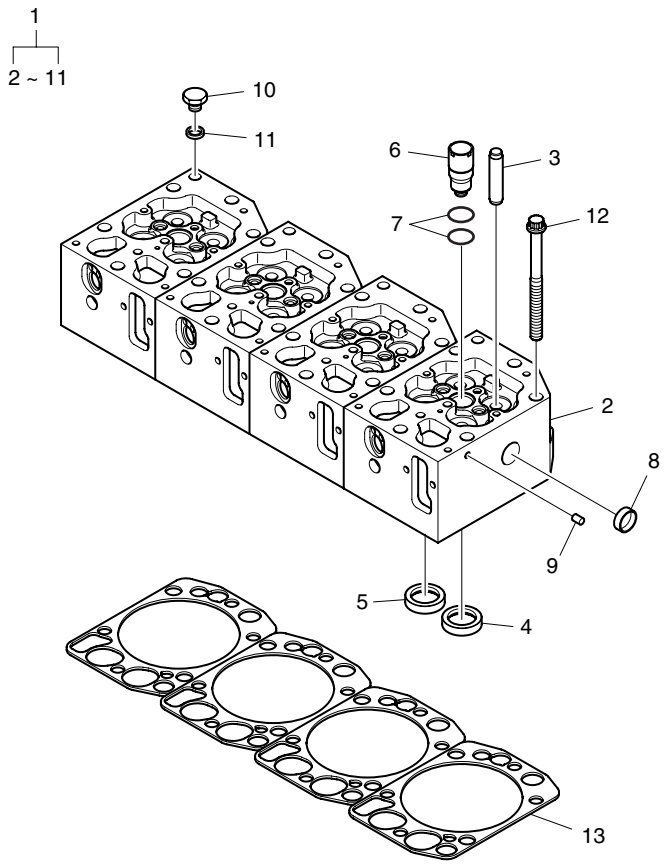
구동 시스템  
 Fig.009 DRIVING SYSTEM(2)



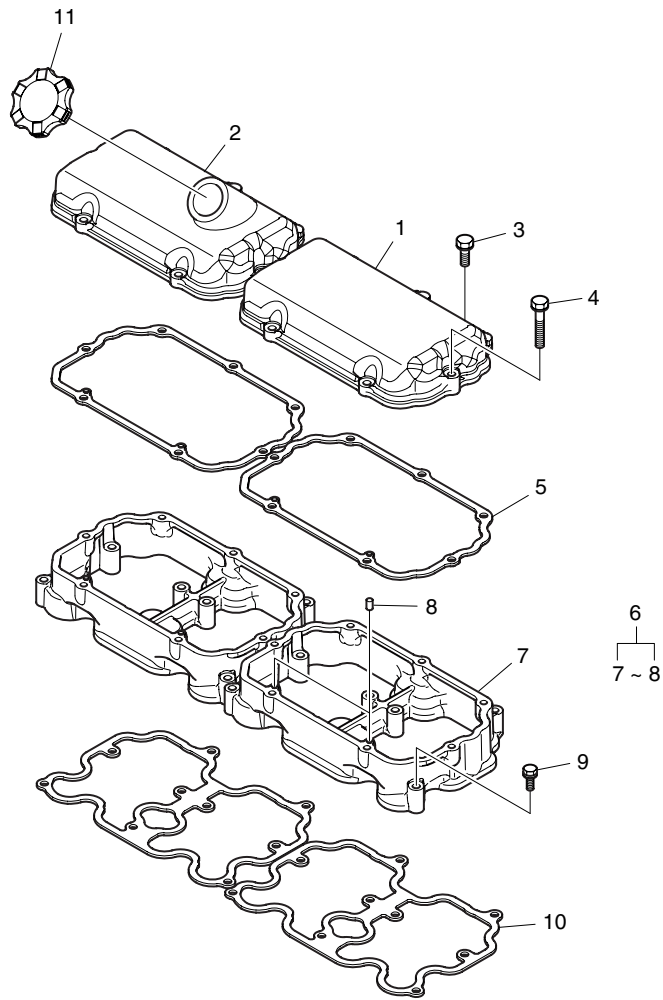
구동 시스템  
Fig.010 DRIVING SYSTEM(3)



실린더 헤드  
Fig.011 CYLINDER HEAD

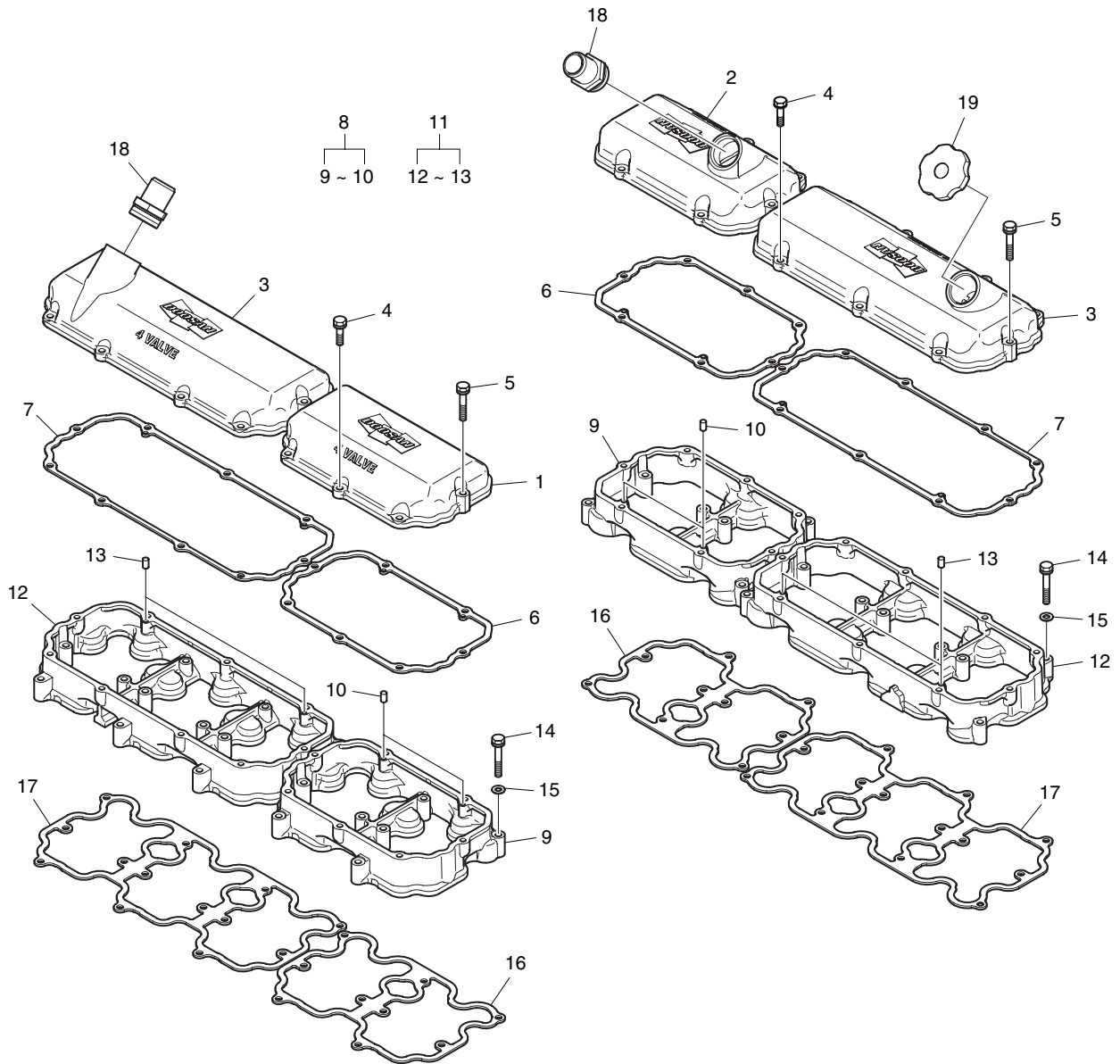


실린더 헤드 커버  
Fig.012 CYLINDER HEAD COVER(1)

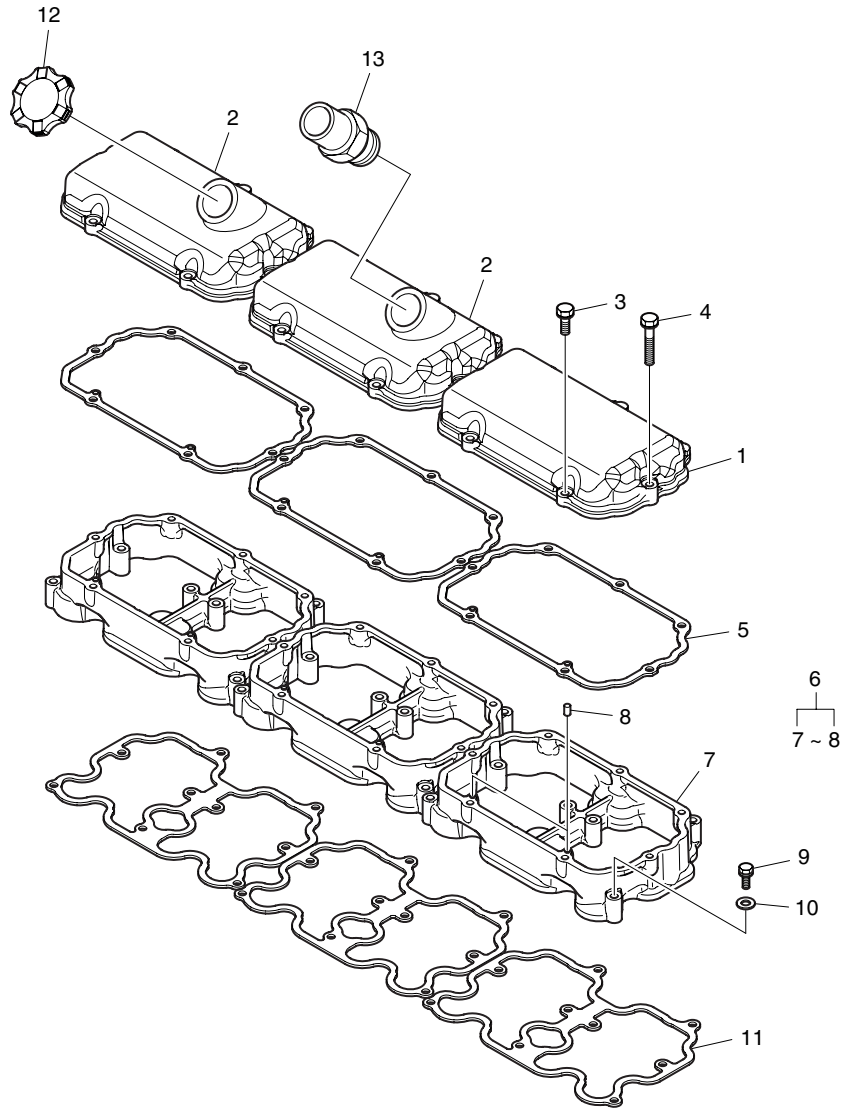




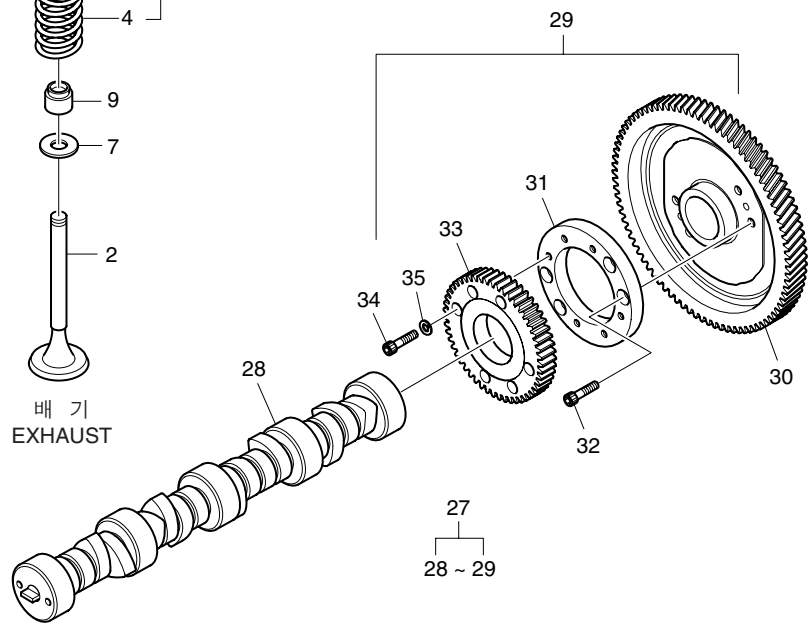
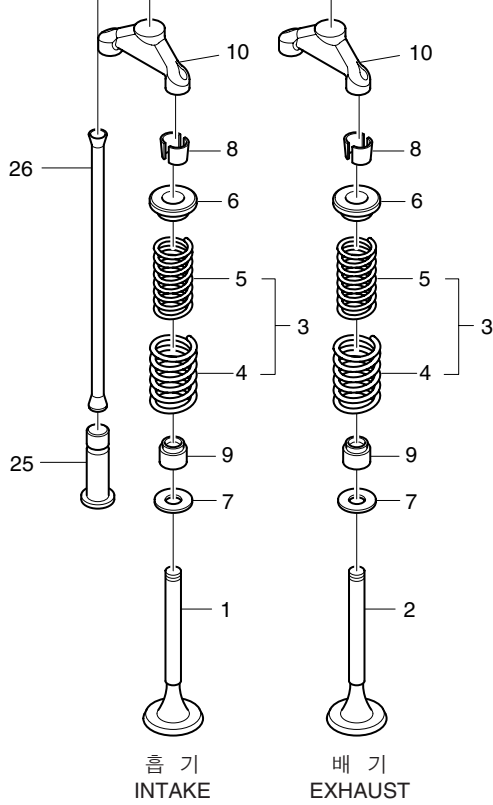
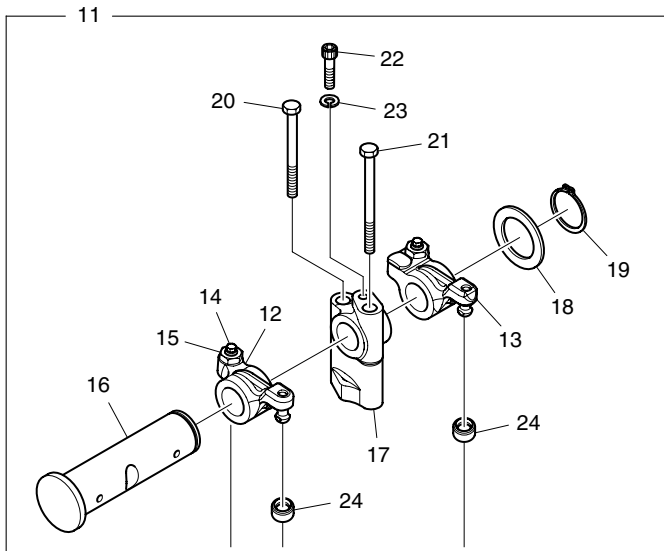
실린더 헤드 커버  
 Fig.013 CYLINDER HEAD COVER(2)



실린더 헤드 커버  
Fig.014 CYLINDER HEAD COVER(3)

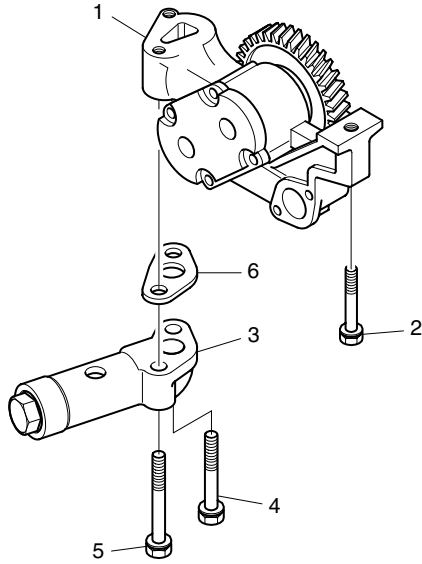


타이밍 시스템  
Fig.015 TIMING SYSTEM

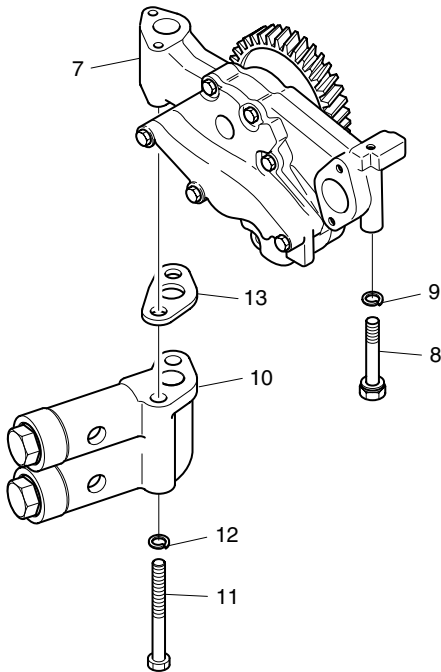


오일 펌프  
Fig.016 OIL PUMP

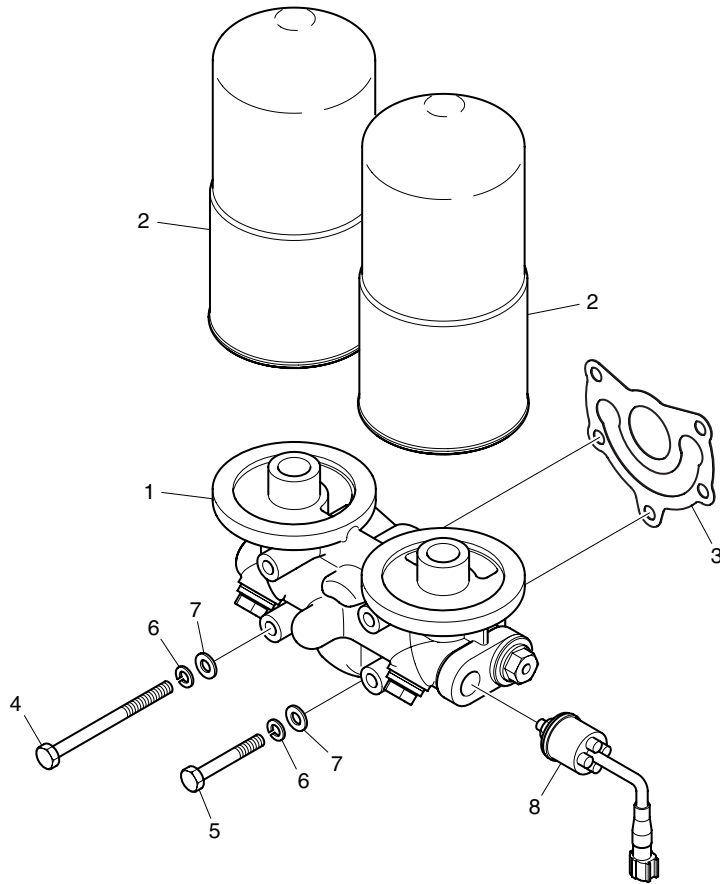
EUZOA, EUZOB



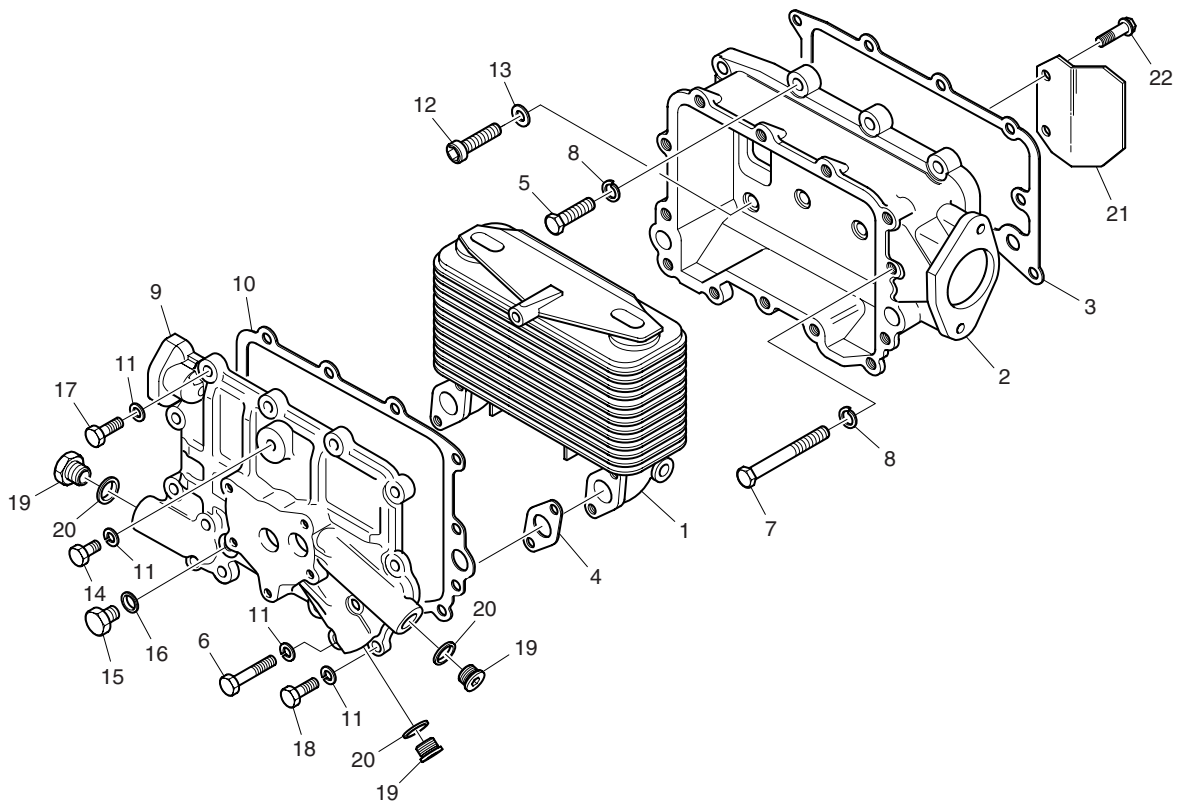
EUSOA, EUSOB, EUYOA, EUYOB, EUYOD



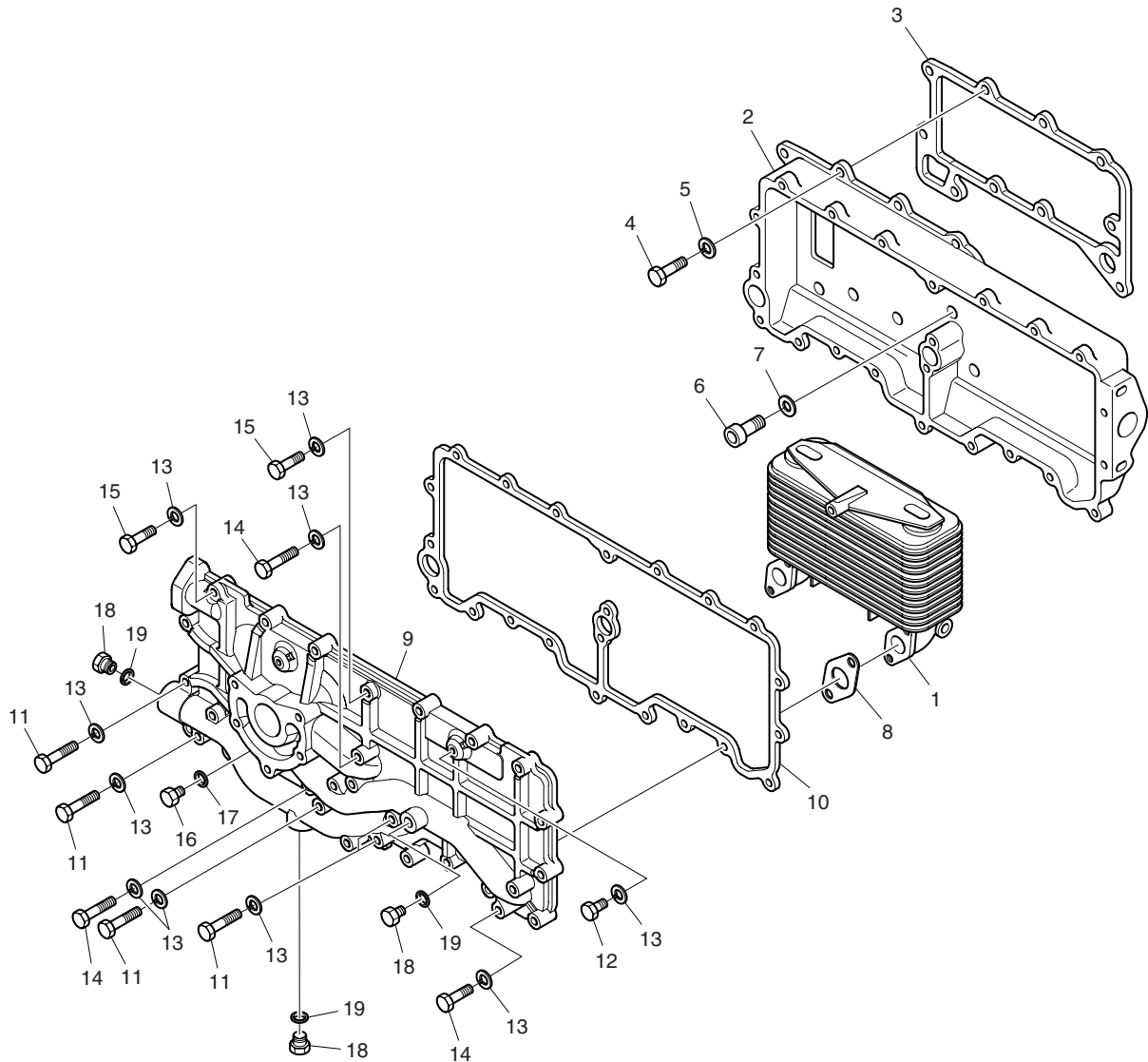
오일 여과기  
Fig.017 OIL FILTER



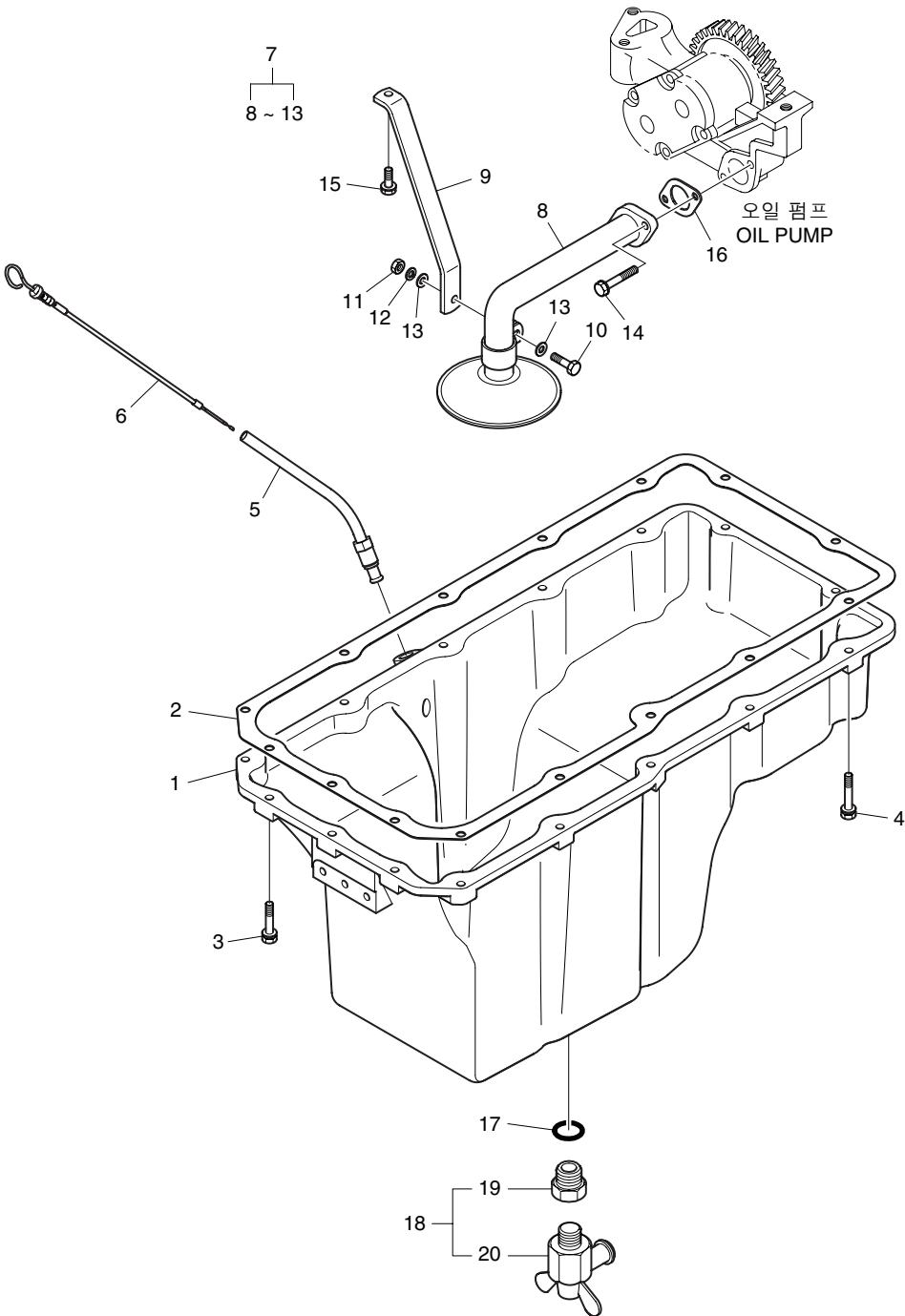
오일 냉각기  
Fig.018 OIL COOLER(1)



오일 냉각기  
Fig.019 OIL COOLER(2)

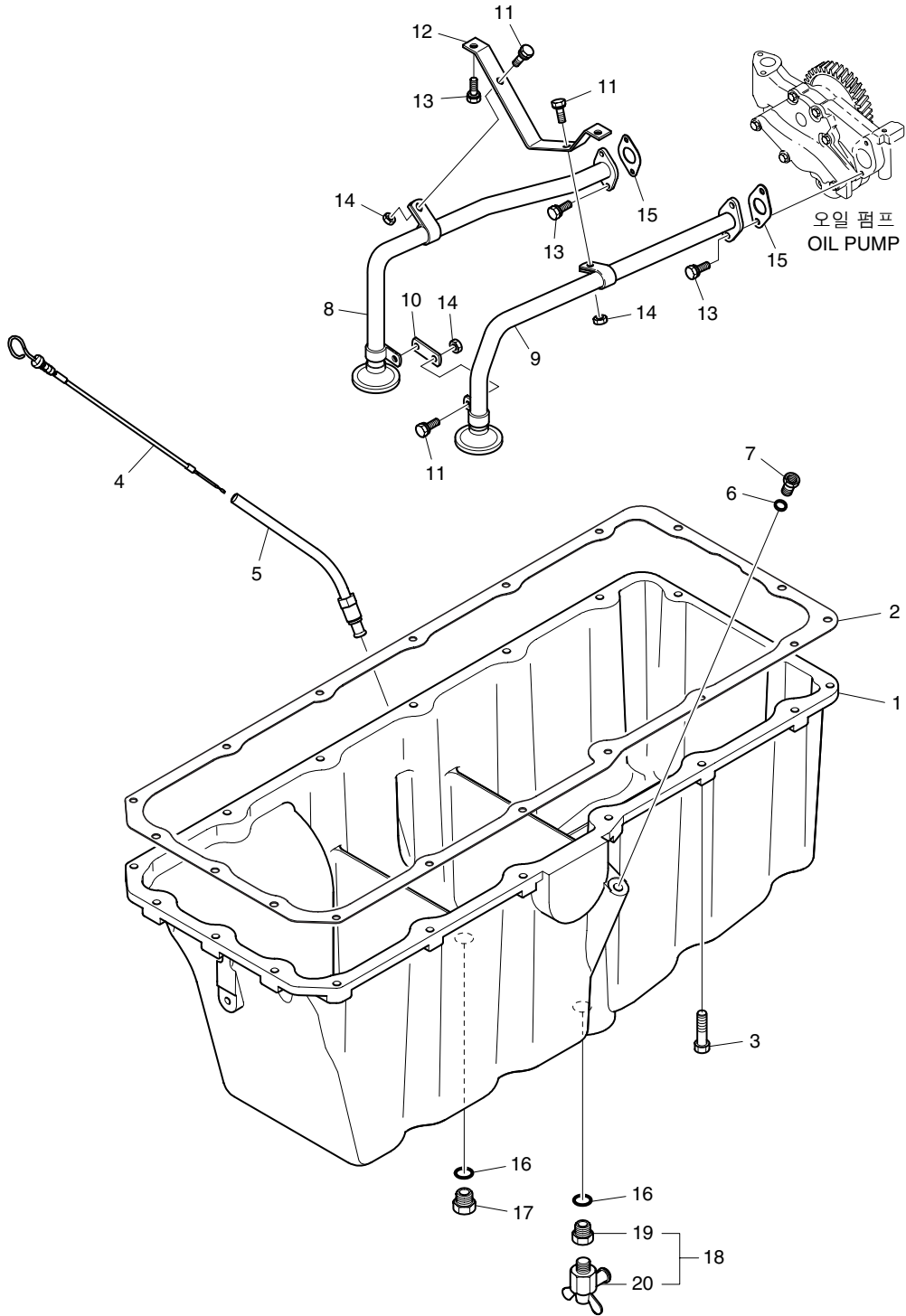


오일 팬  
Fig.020 OIL PAN(1)

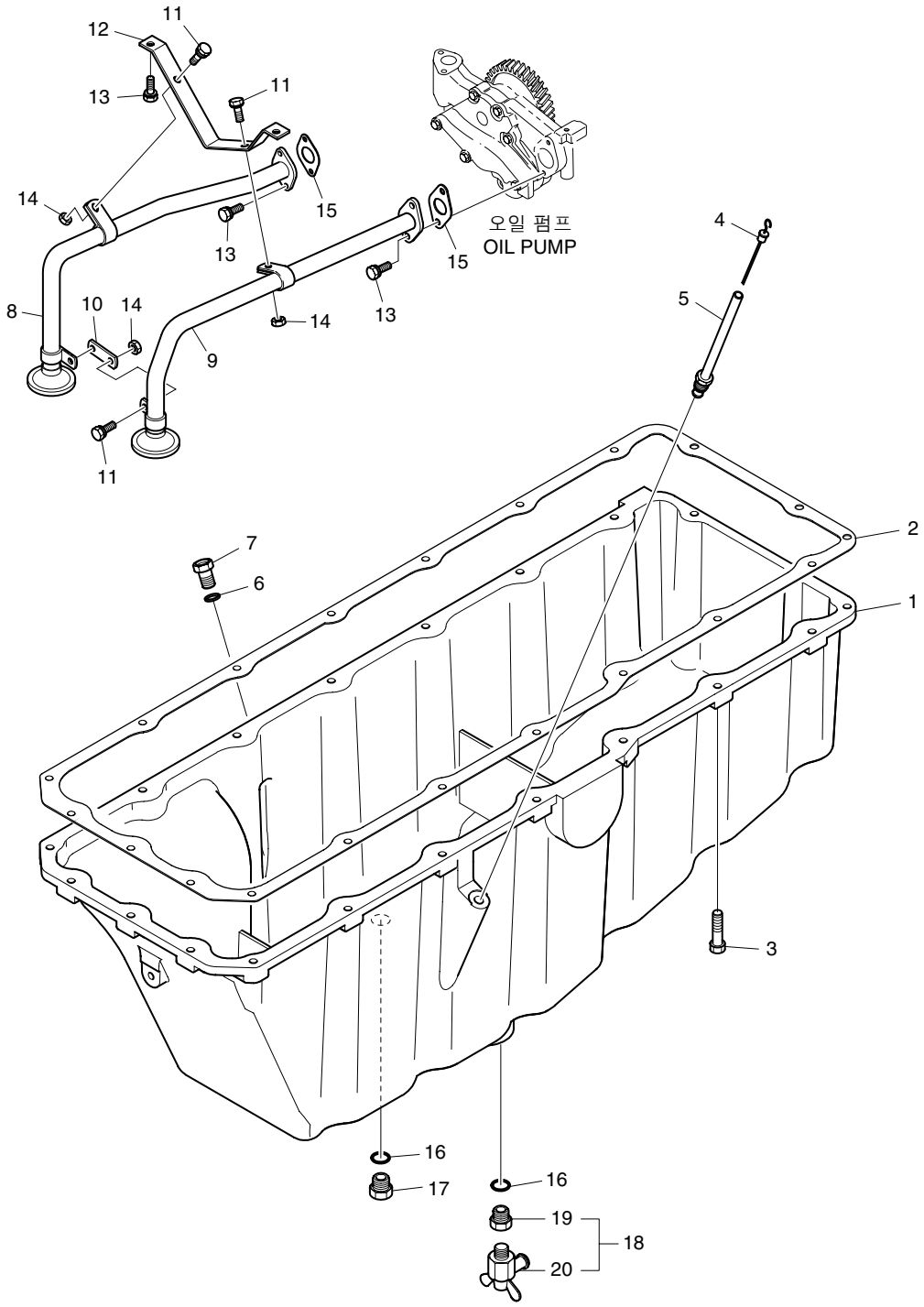




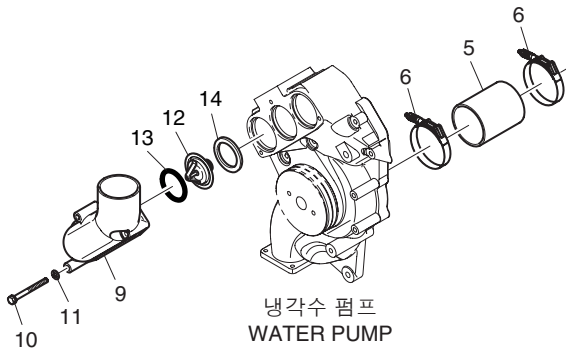
오일 팬  
Fig.021 OIL PAN(2)



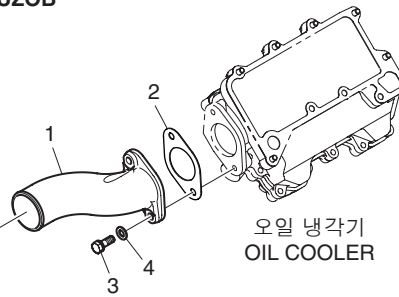
오일 팬  
Fig.022 OIL PAN(3)



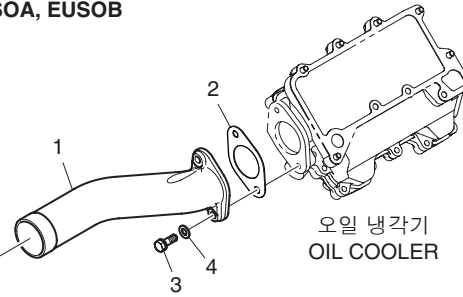
냉각수 파이프  
Fig.023 COOLING WATER PIPE



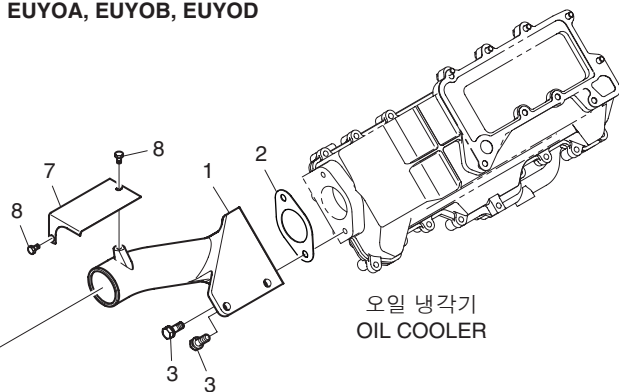
EUZOA, EUZOB



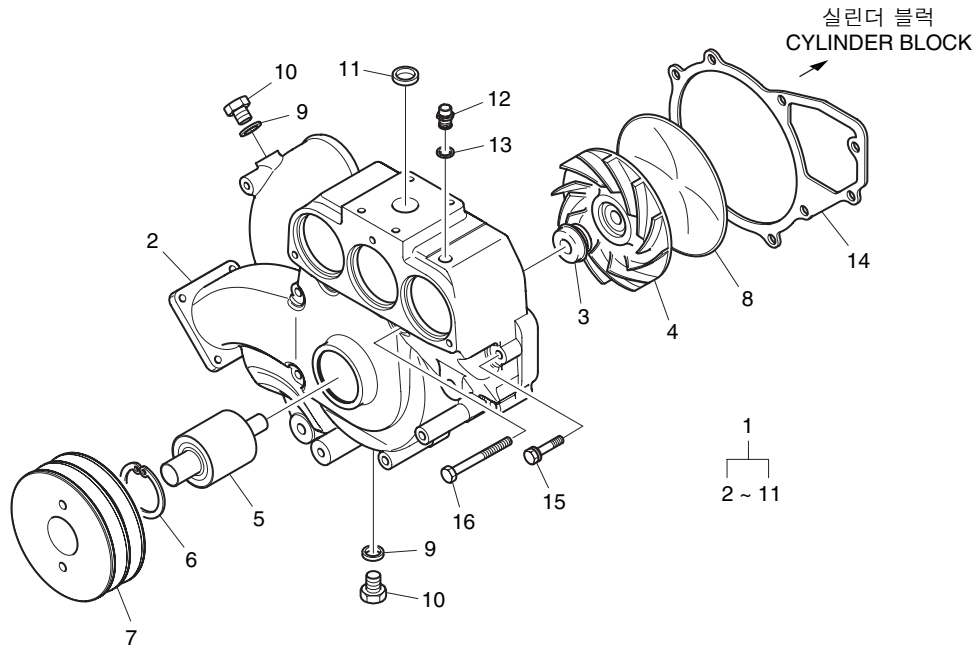
EUSOA, EUSOB



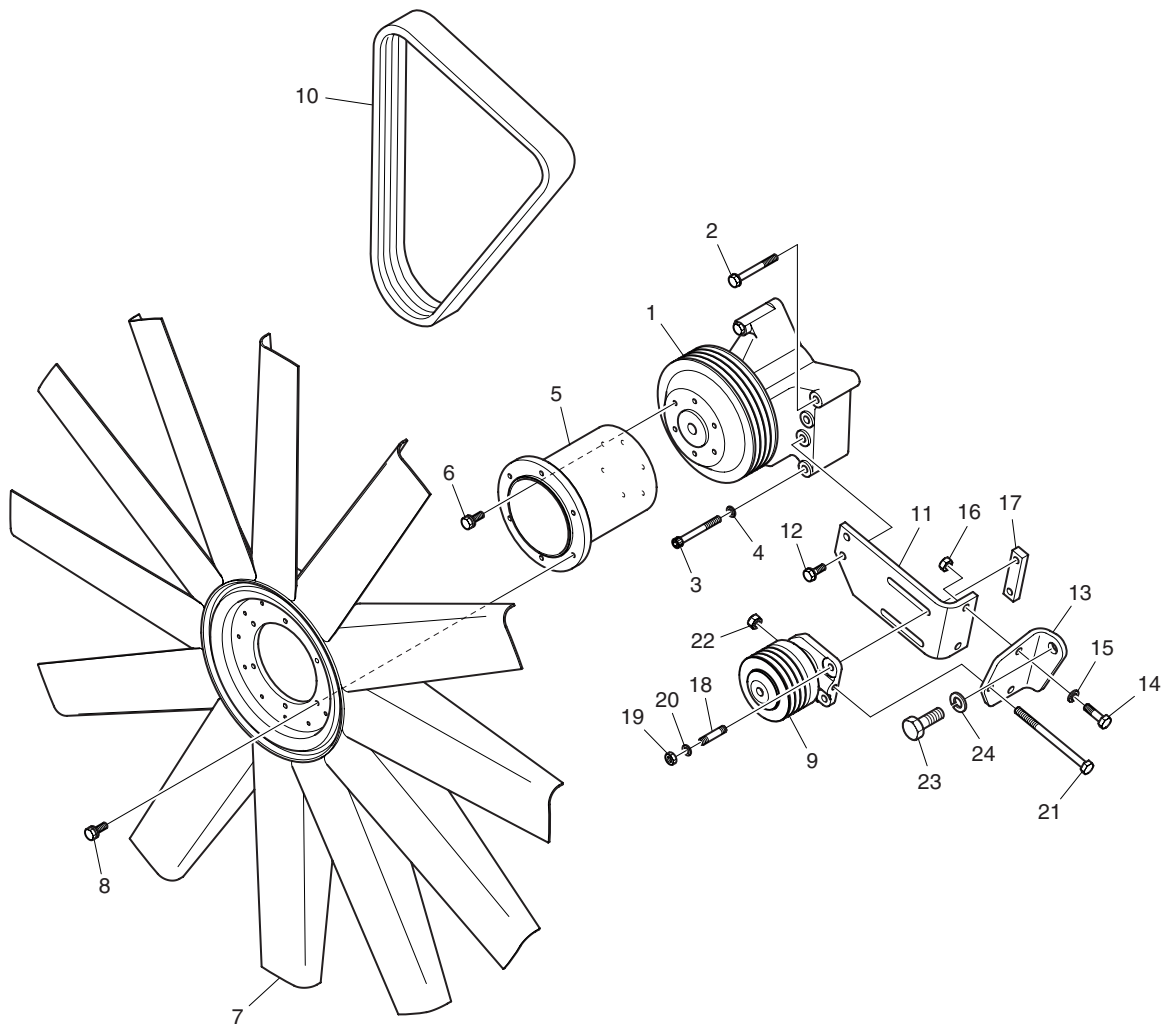
EUYOA, EUYOB, EUYOD



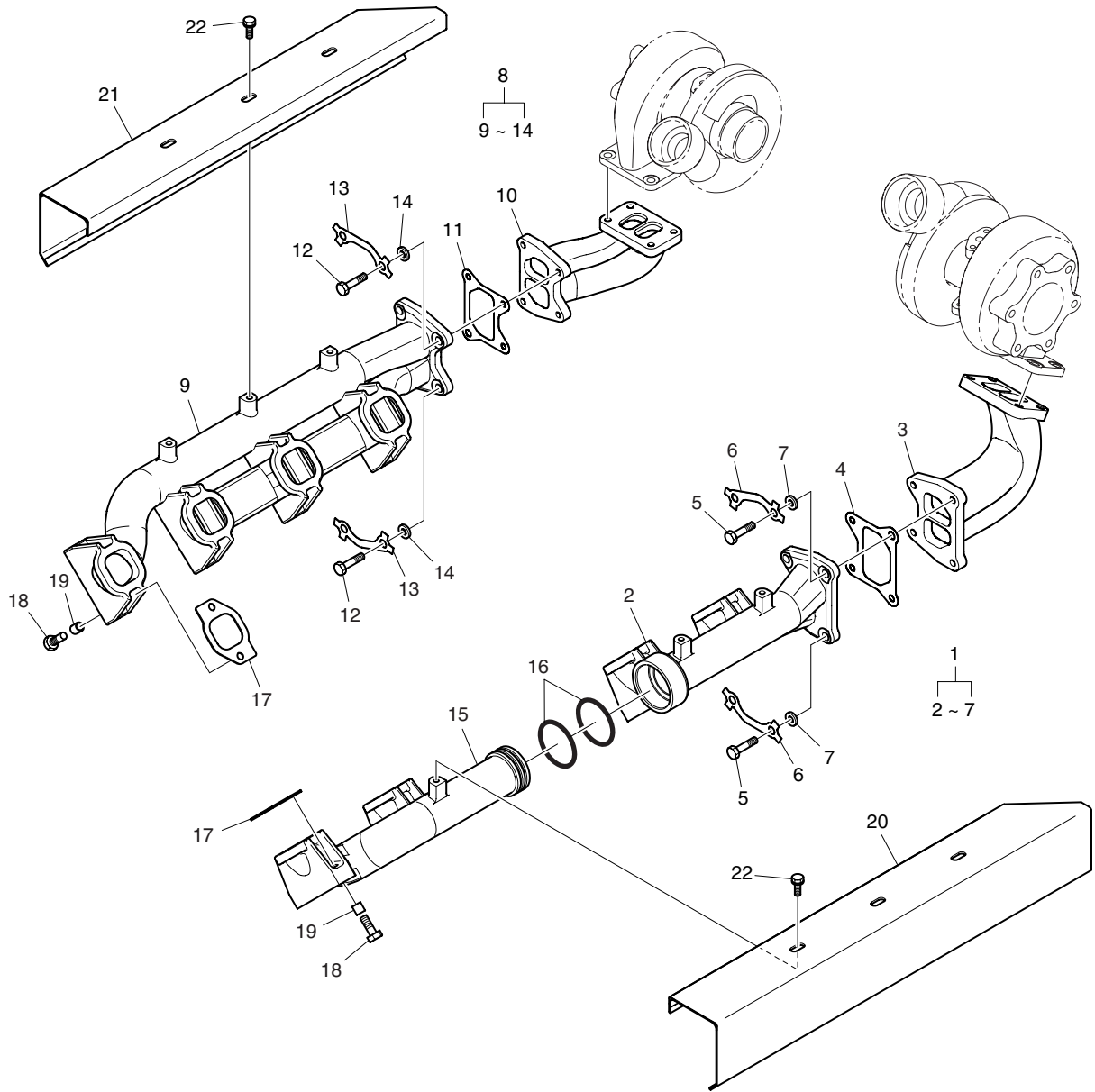
냉각수 펌프  
Fig.024 WATER PUMP



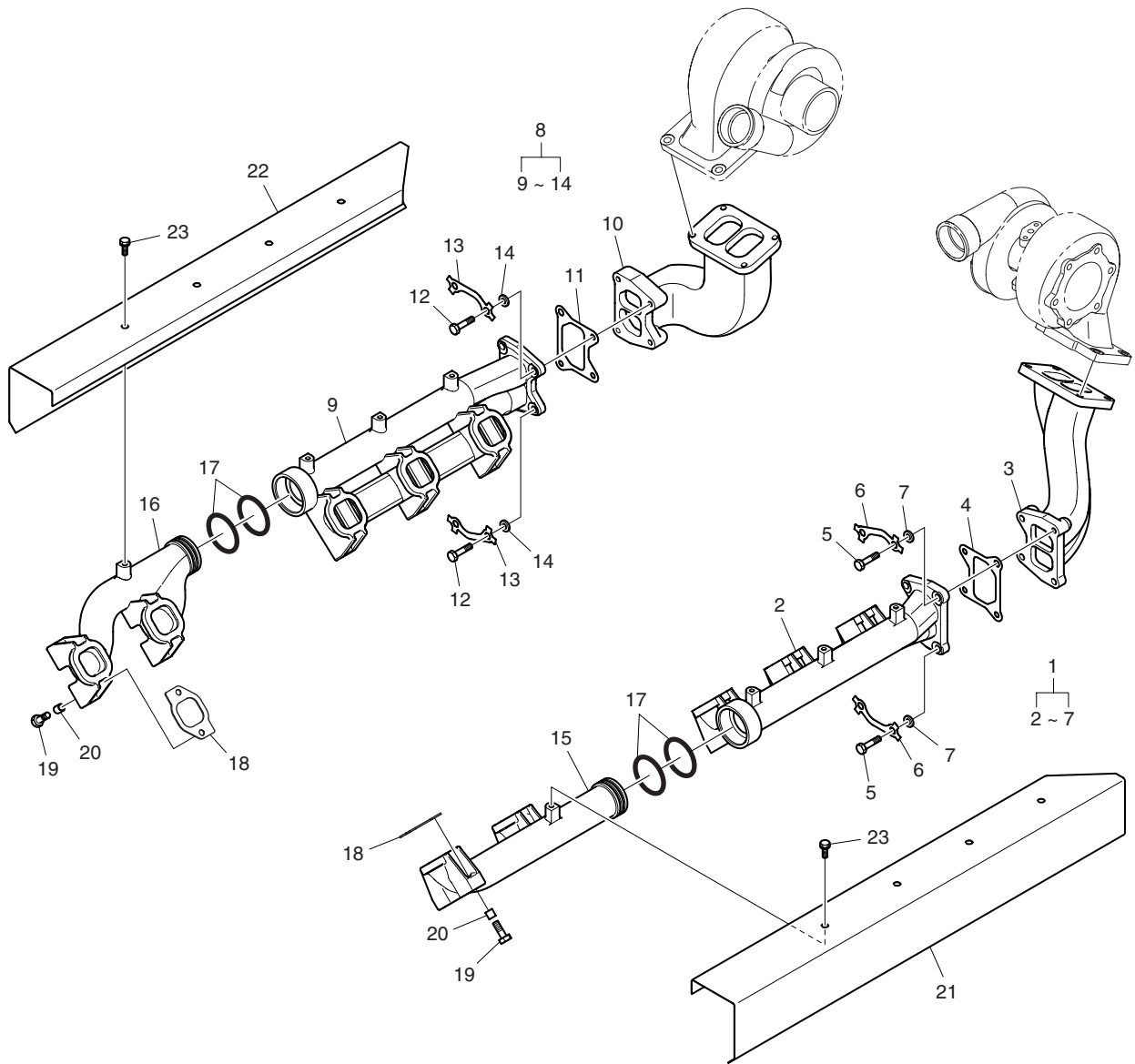
냉각 팬  
Fig.025 COOLING FAN



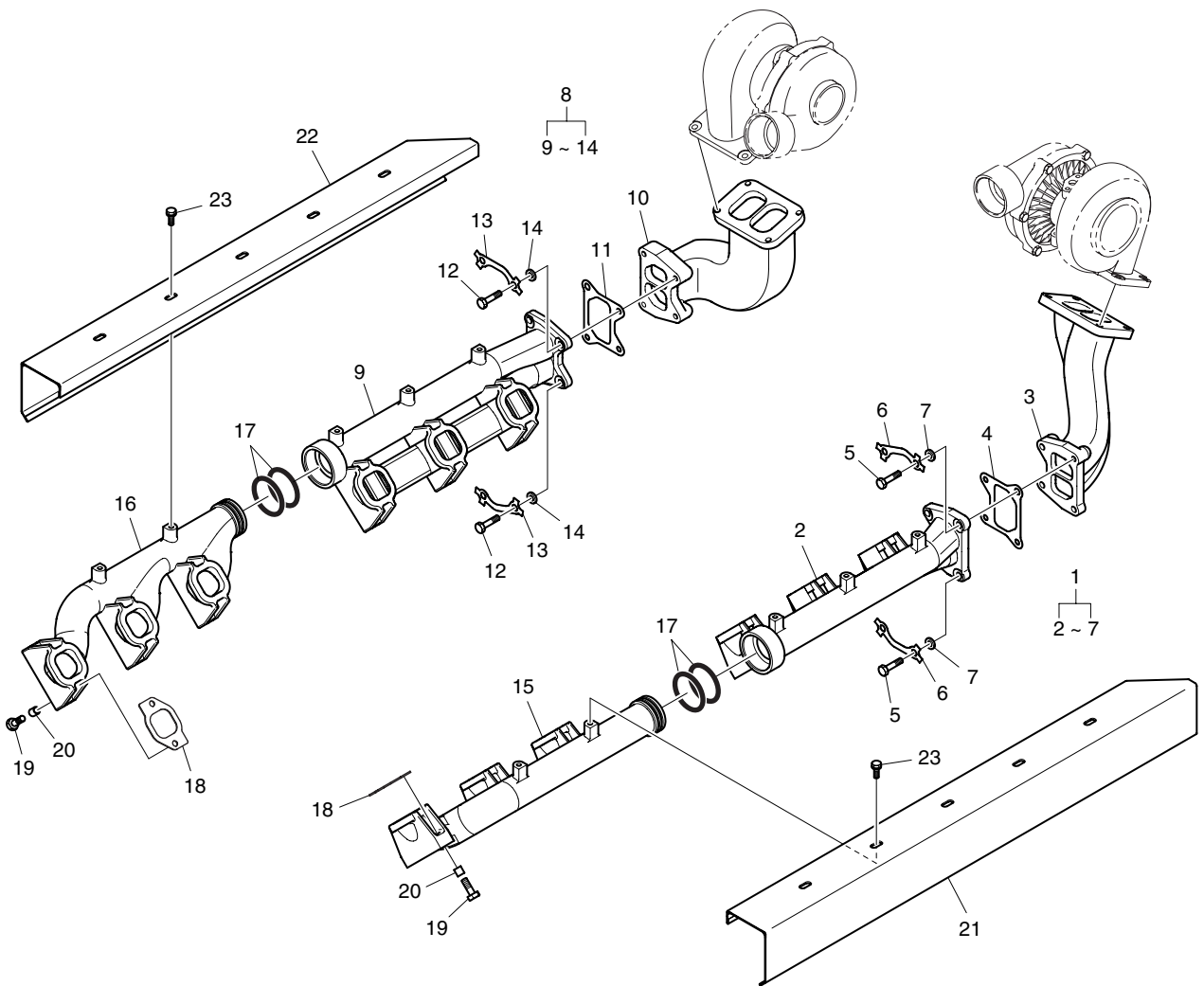
배기 매니폴드  
Fig.026 EXHAUST MANIFOLD(1)



배기 매니폴드  
Fig.027 EXHAUST MANIFOLD(2)

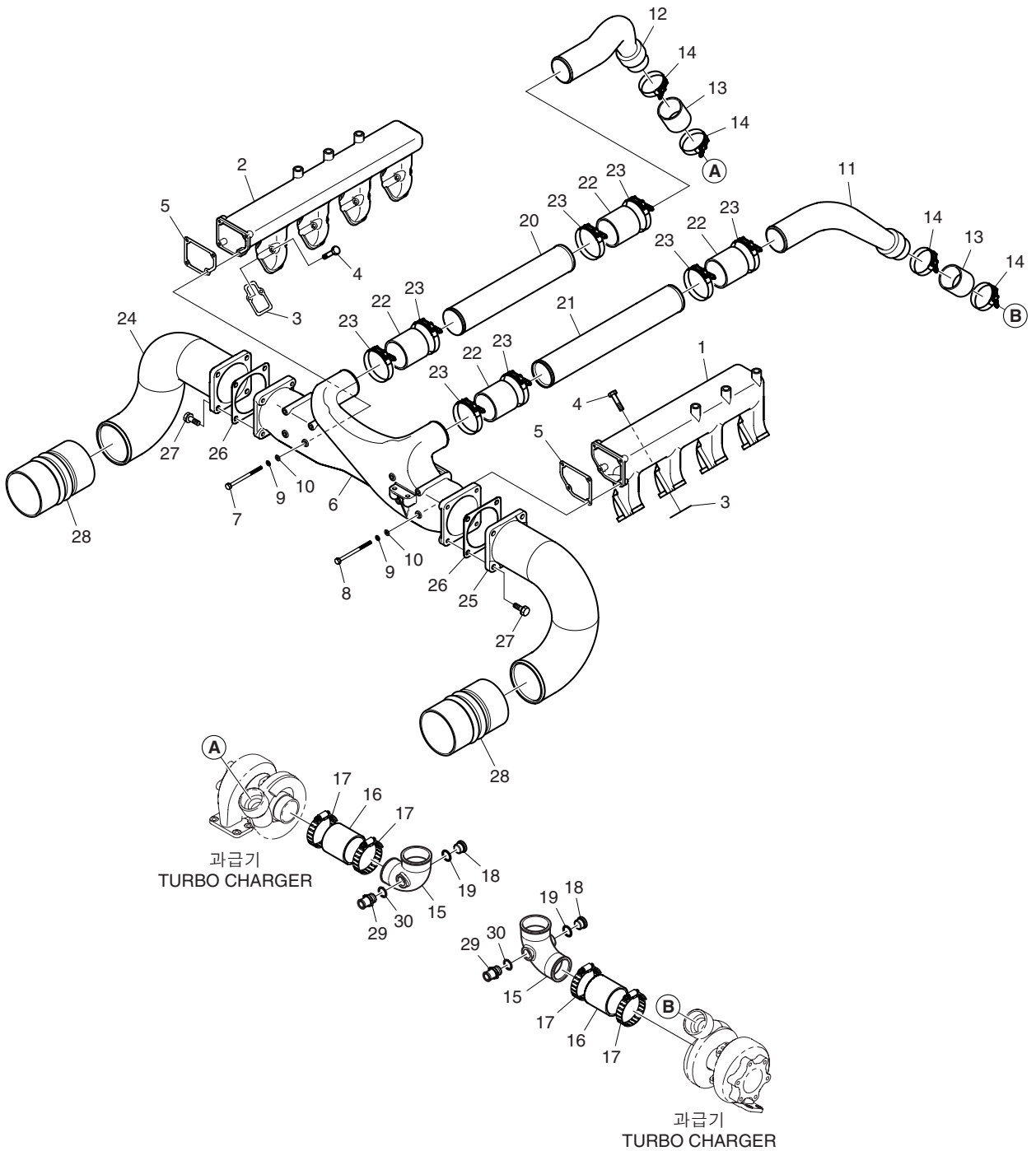


배기 매니폴드  
Fig.028 EXHAUST MANIFOLD(3)

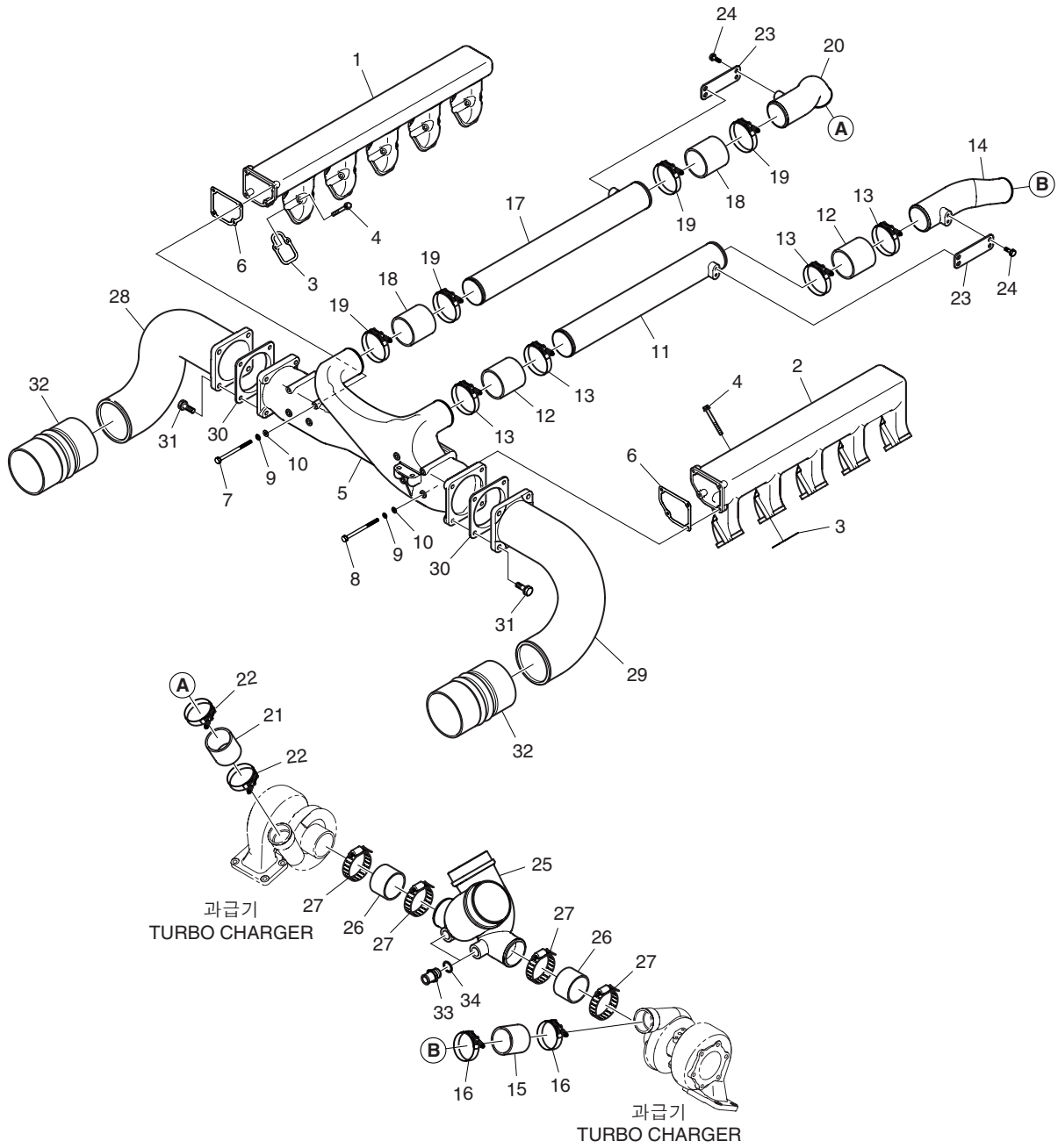




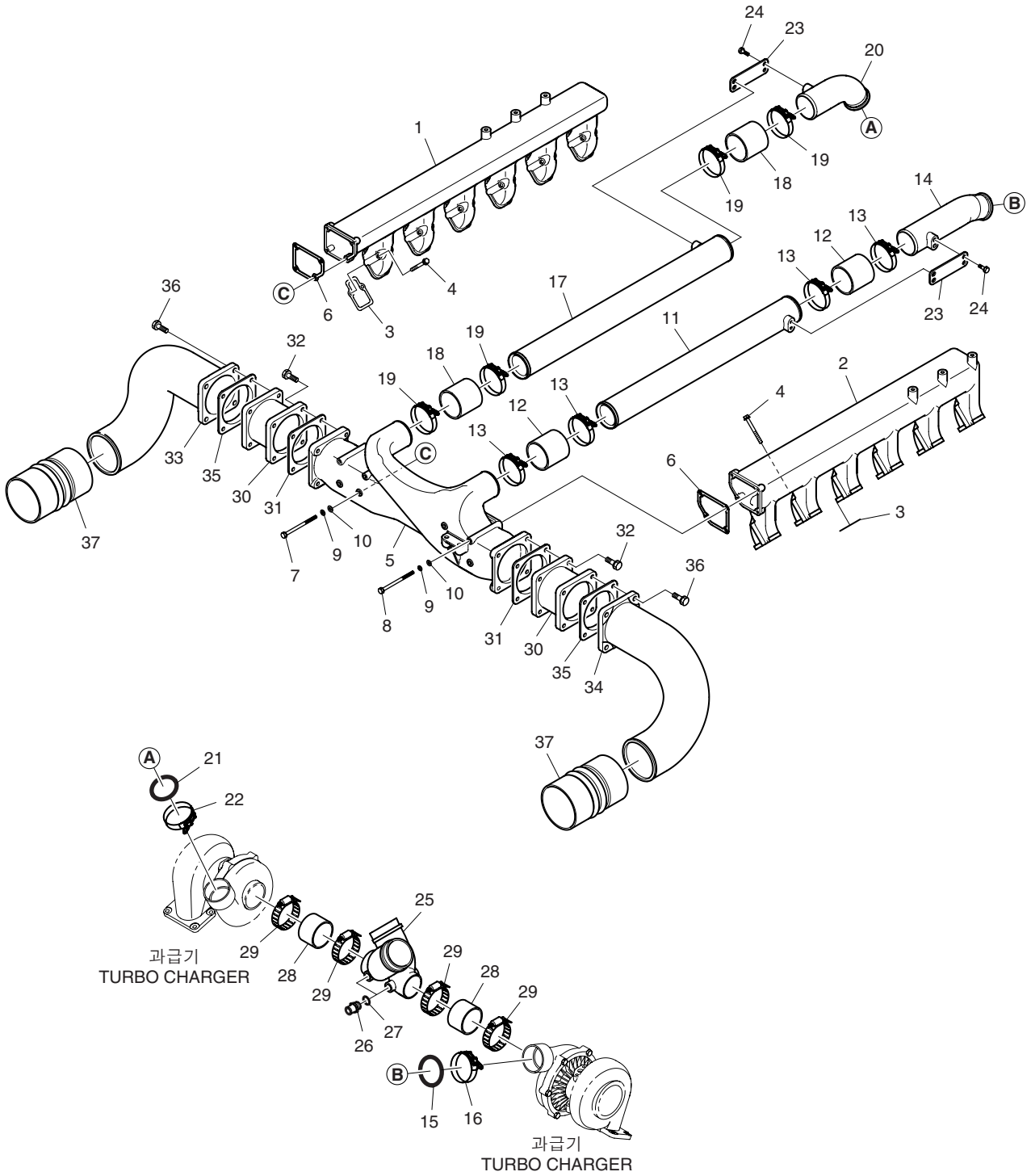
흡기 매니폴드  
Fig.029 INTAKE MANIFOLD(1)



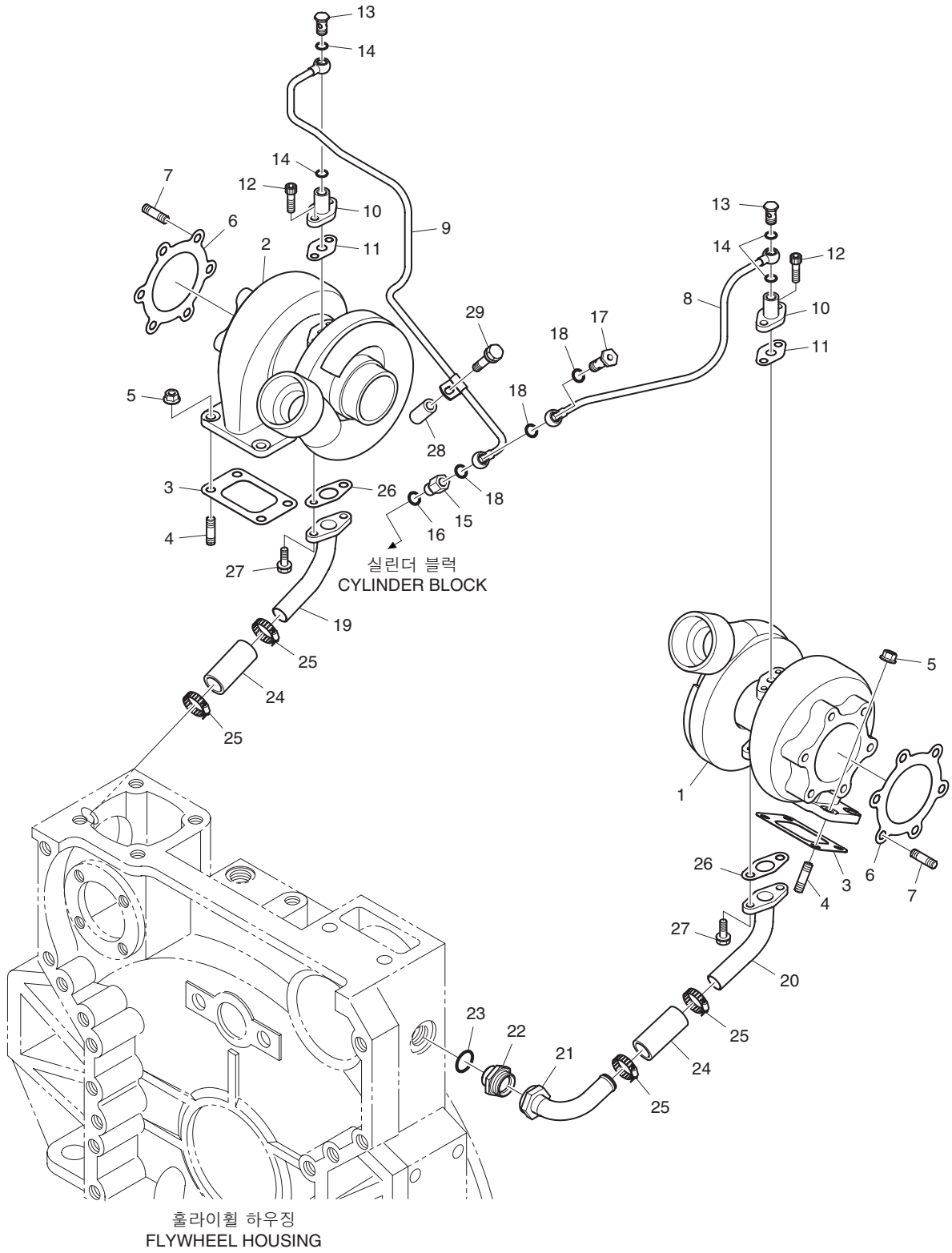
흡기 매니폴드  
Fig.030 INTAKE MANIFOLD(2)



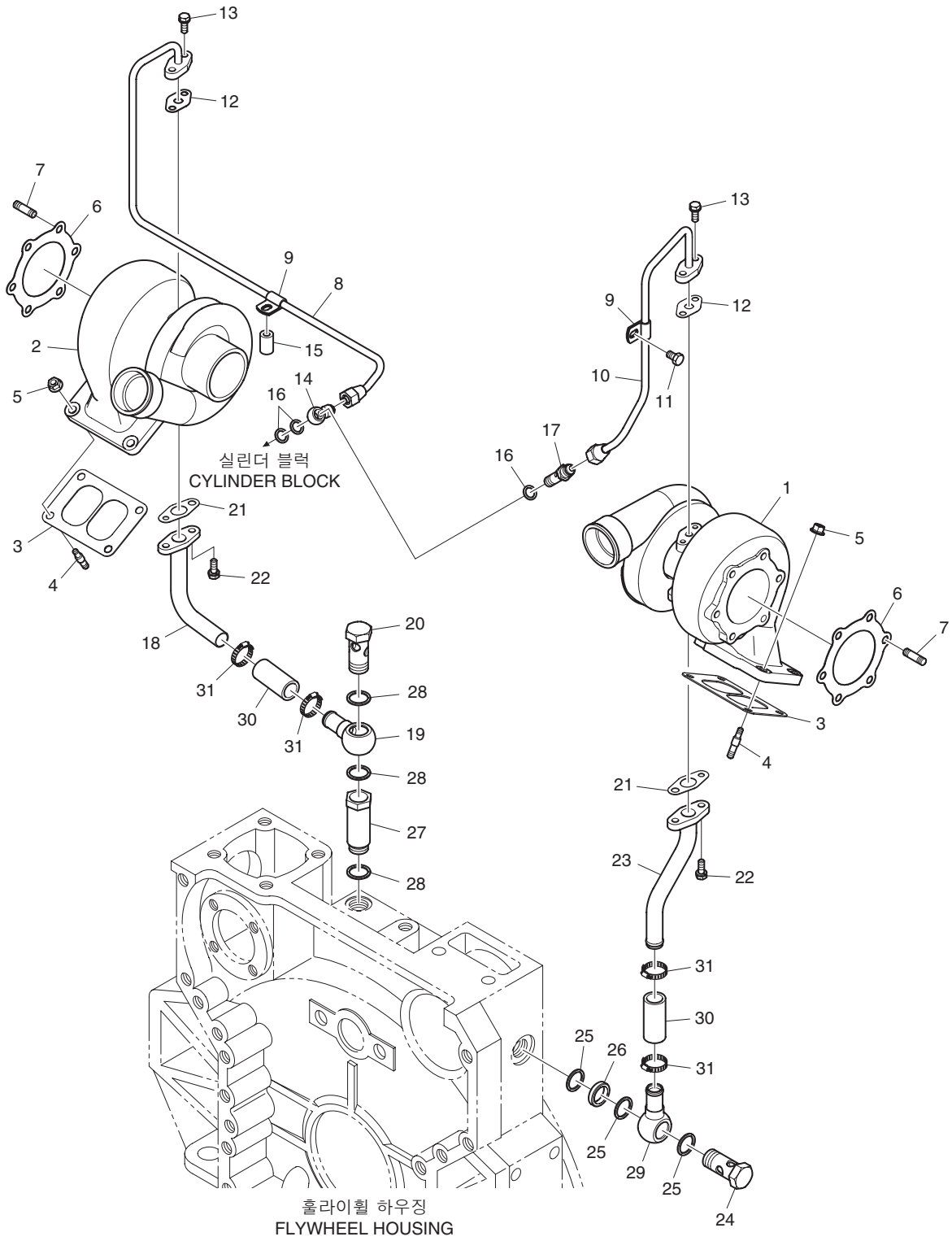
흡기 매니폴드  
Fig.031 INTAKE MANIFOLD(3)



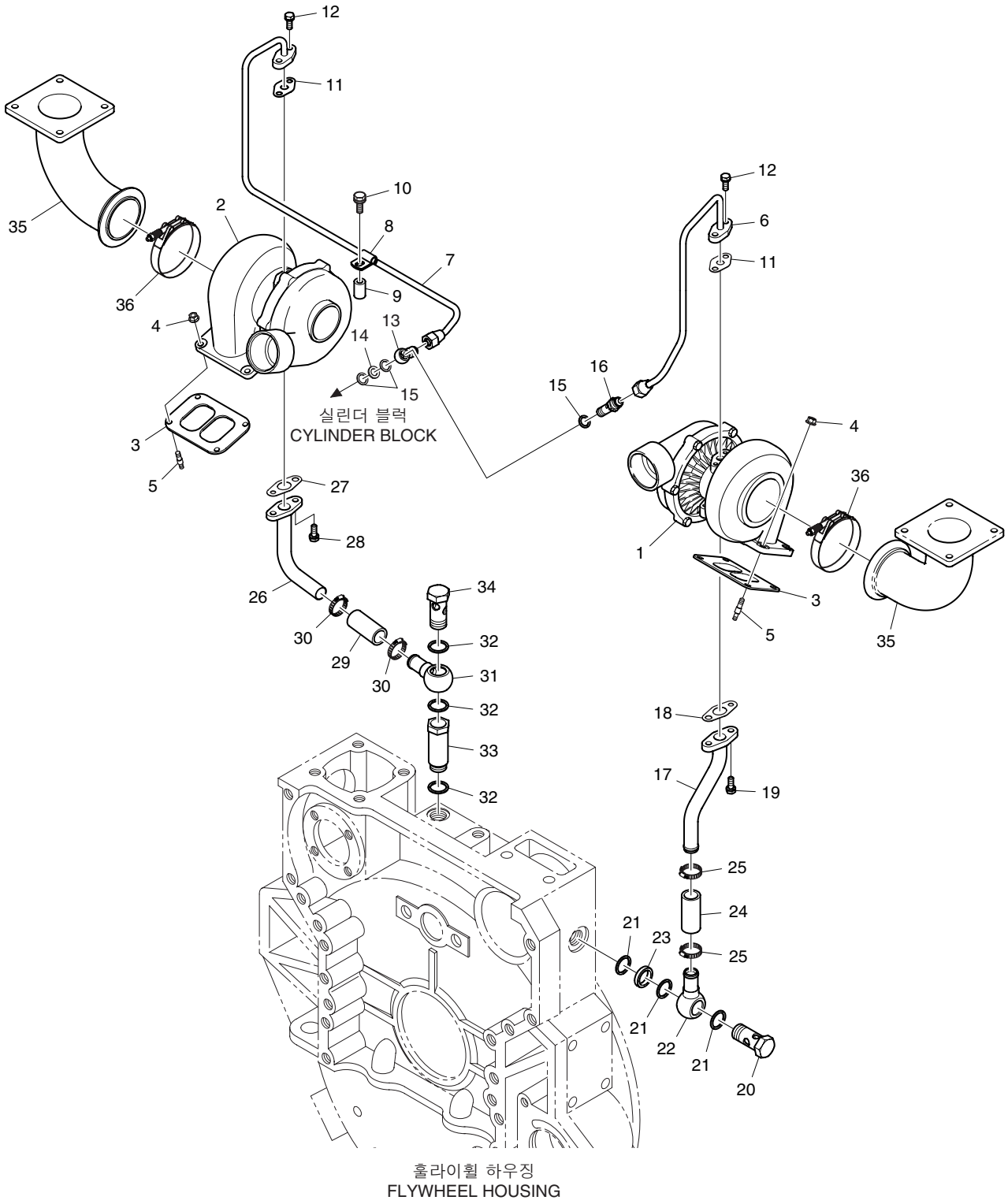
과급기  
Fig.032 TURBO CHARGER(1)



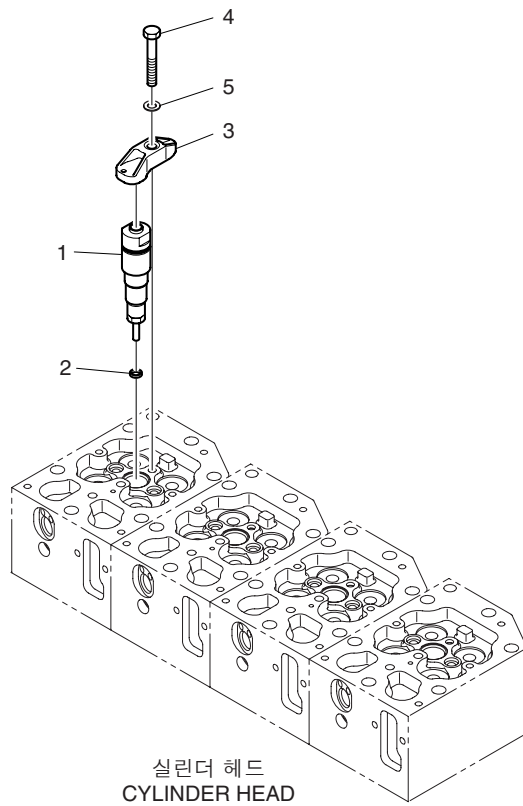
# 과급기 Fig.033 TURBO CHARGER(2)



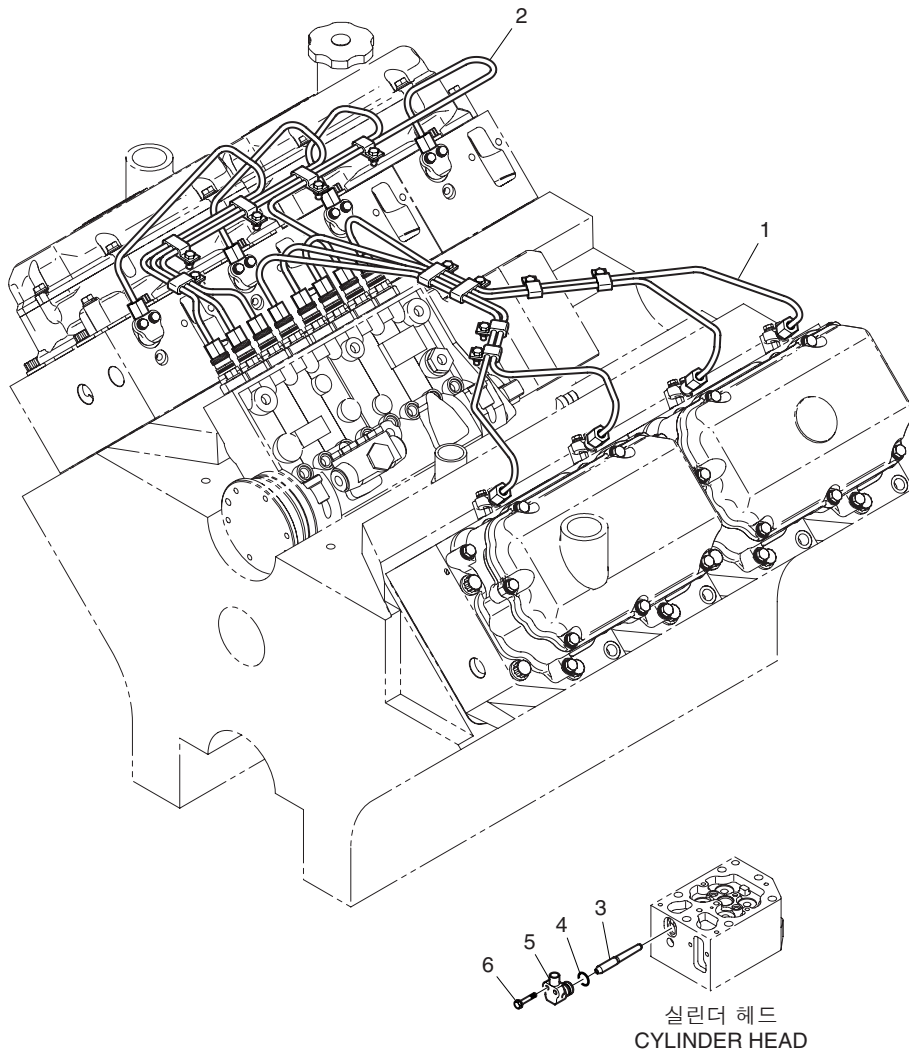
과급기  
Fig.034 TURBO CHARGER(3)



분사 노즐  
Fig.035 INJECTION NOZZLE

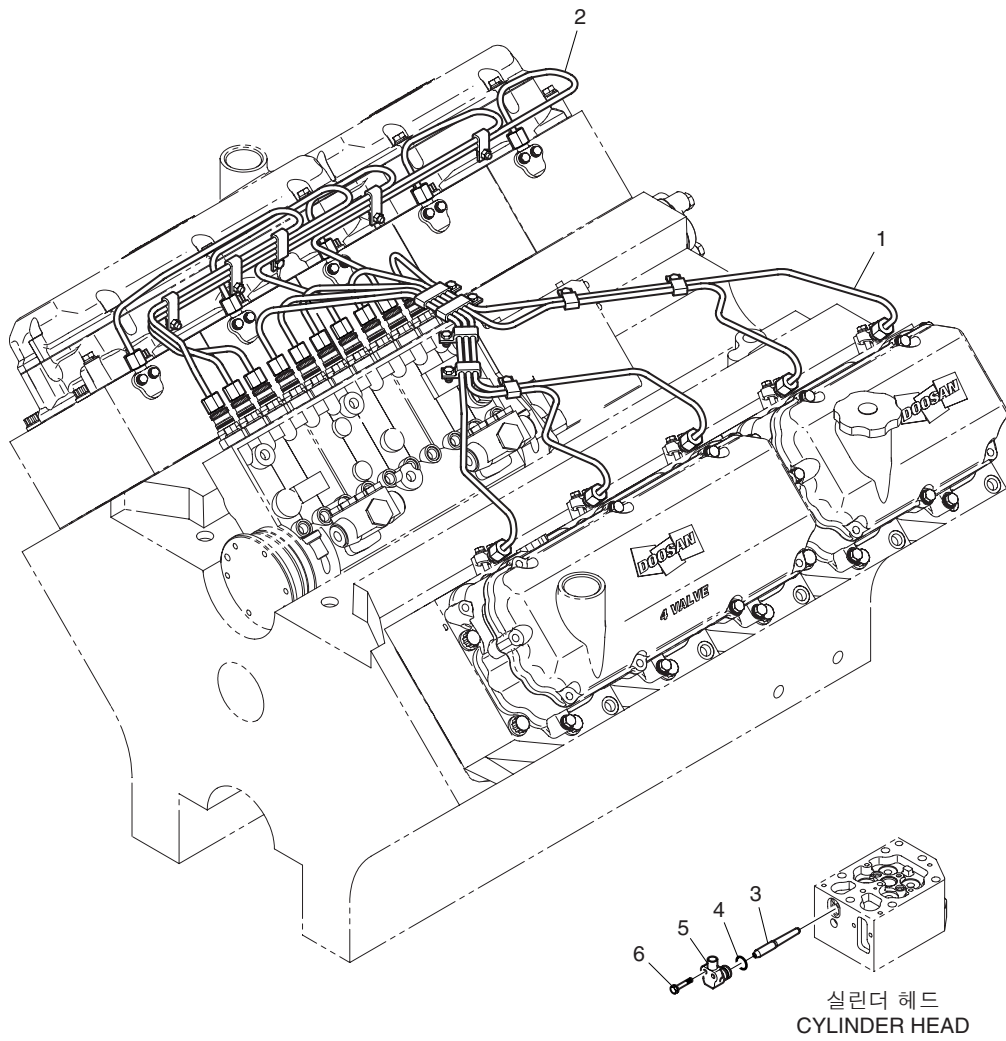


분사 파이프  
Fig.036 INJECTION PIPE(1)

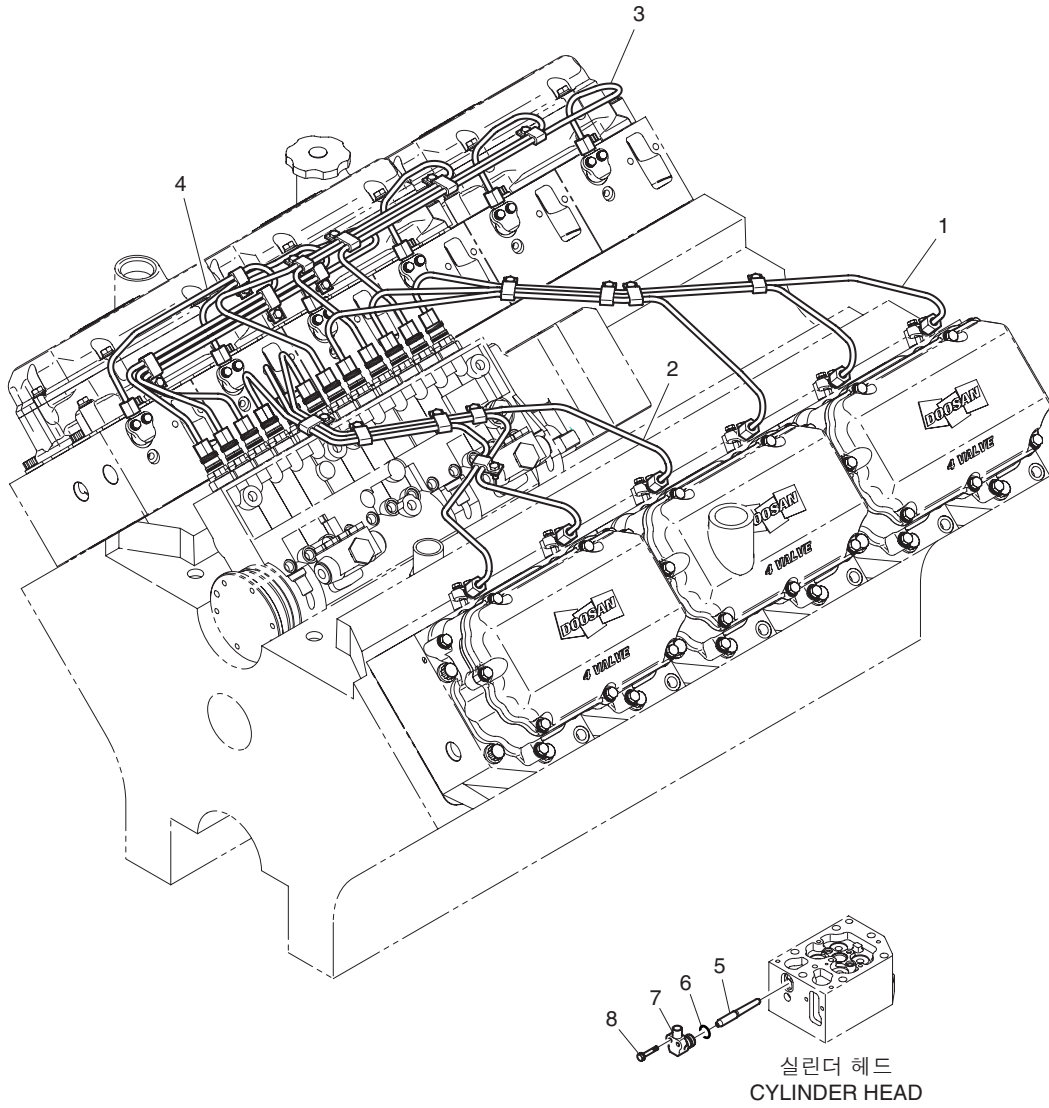




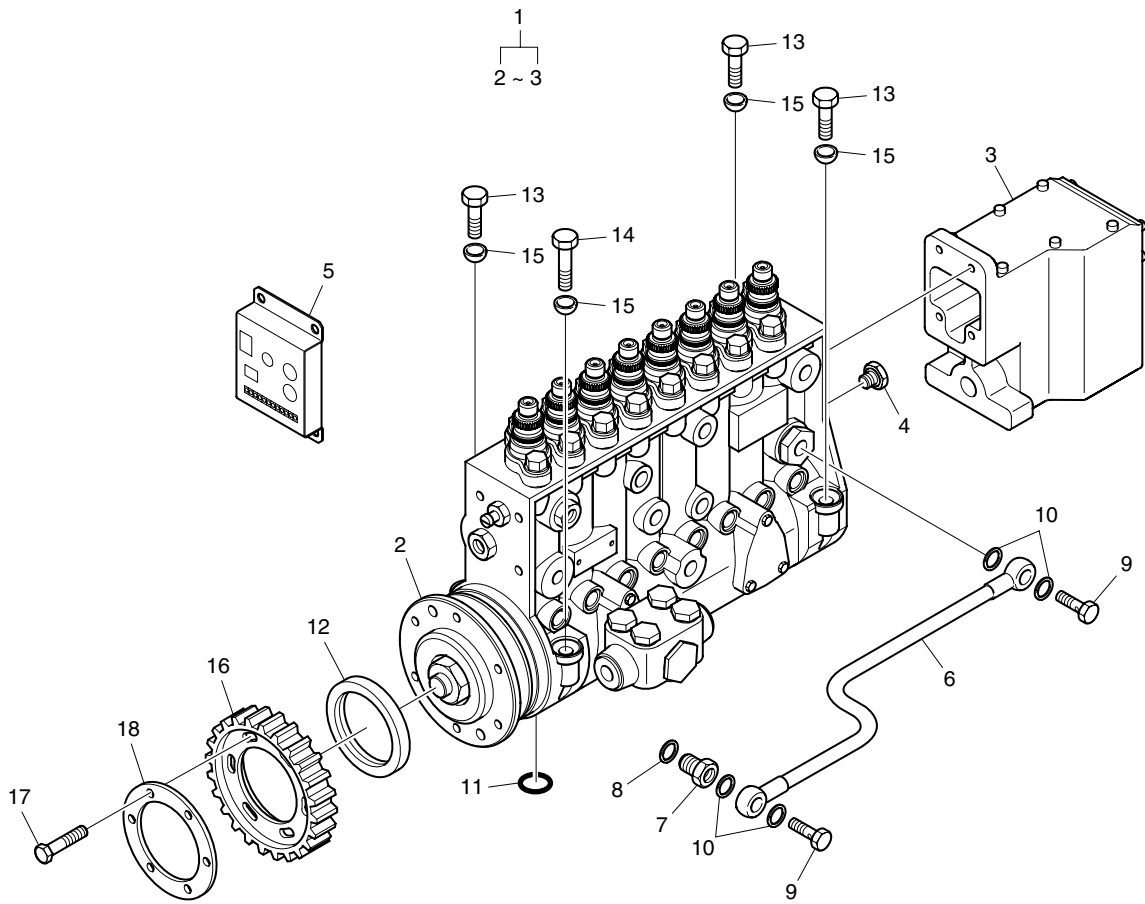
분사 파이프  
Fig.037 INJECTION PIPE(2)



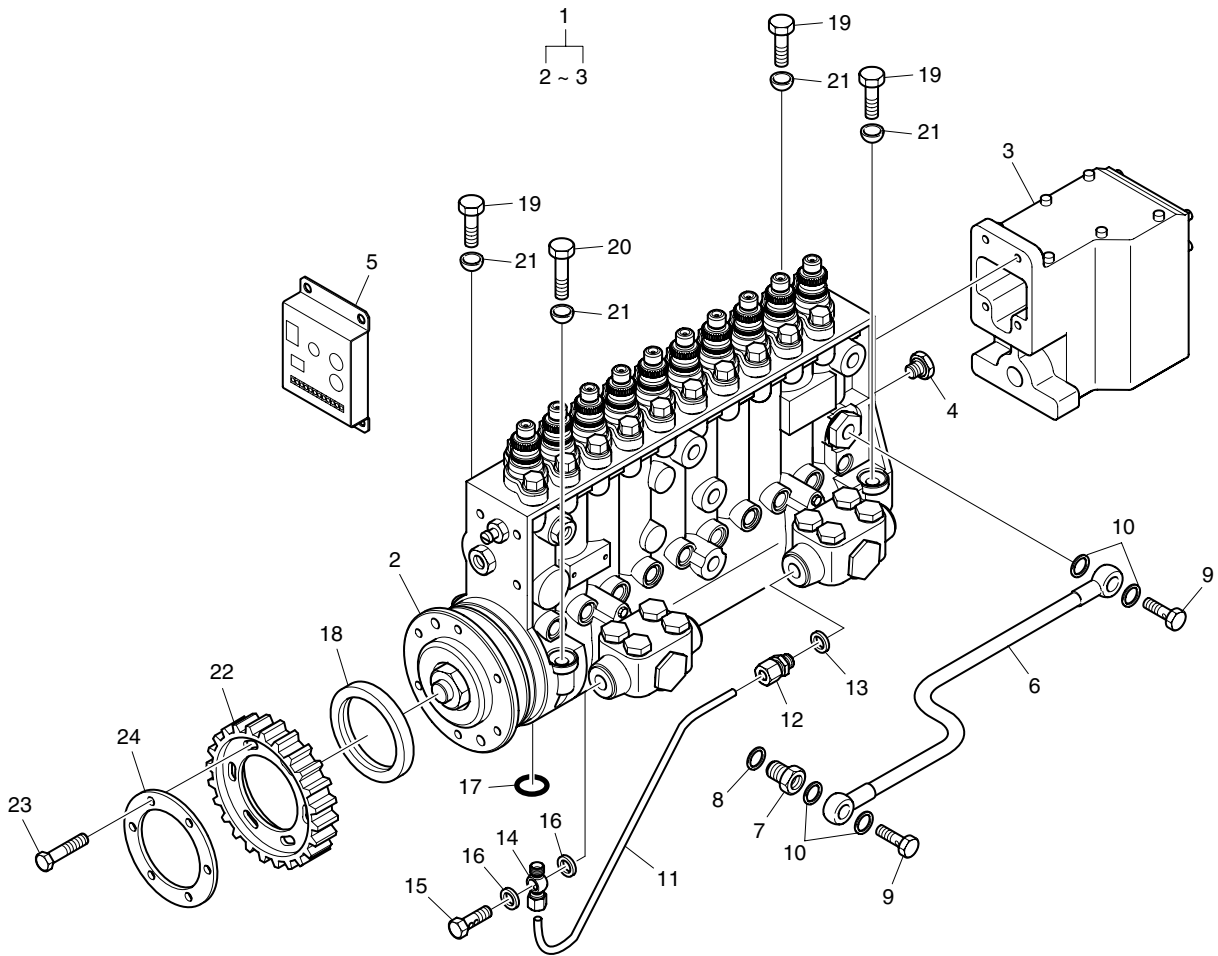
분사 파이프  
Fig.038 INJECTION PIPE(3)



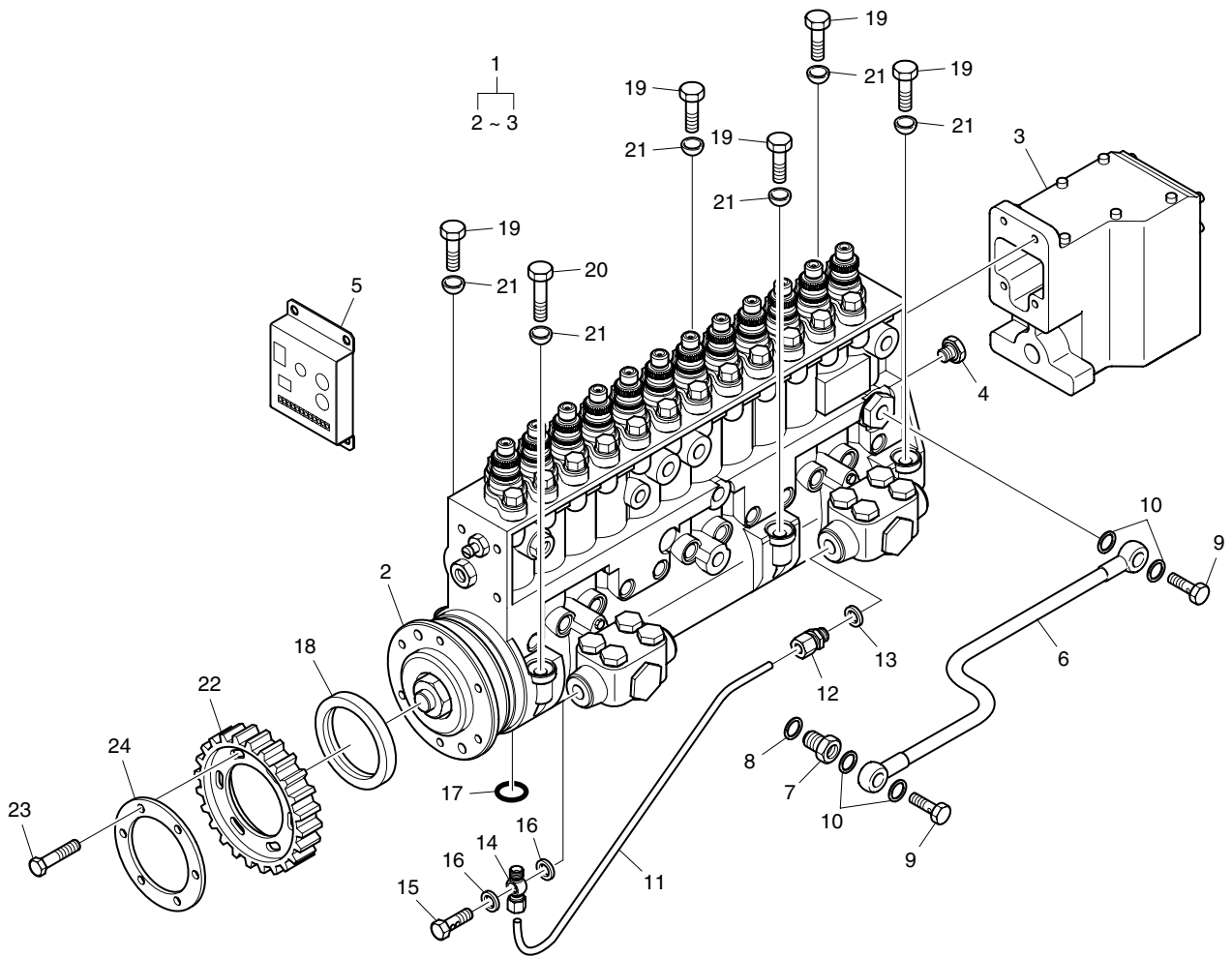
분사 펌프  
Fig.039 INJECTION PUMP(1)



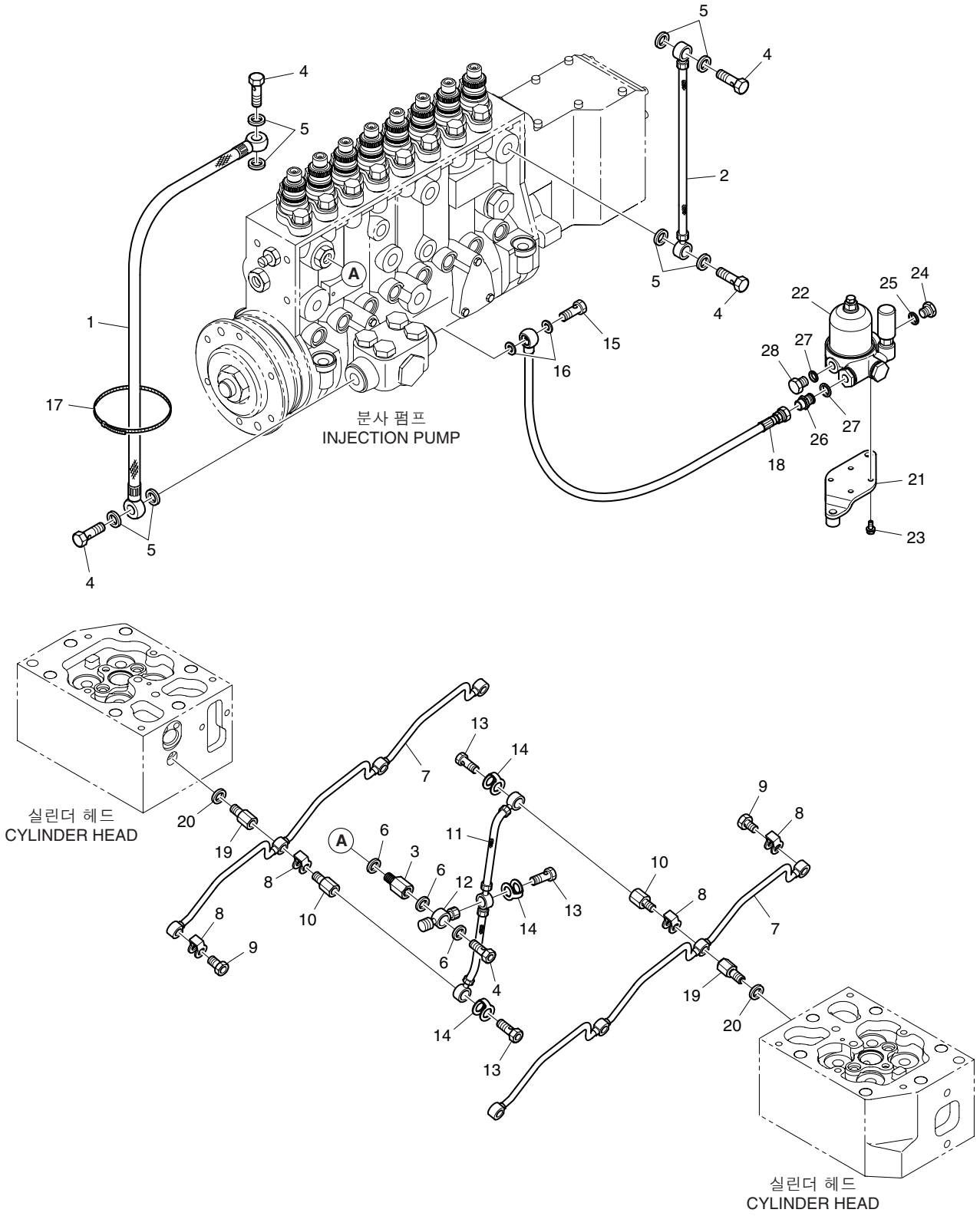
분사 펌프  
Fig.040 INJECTION PUMP(2)



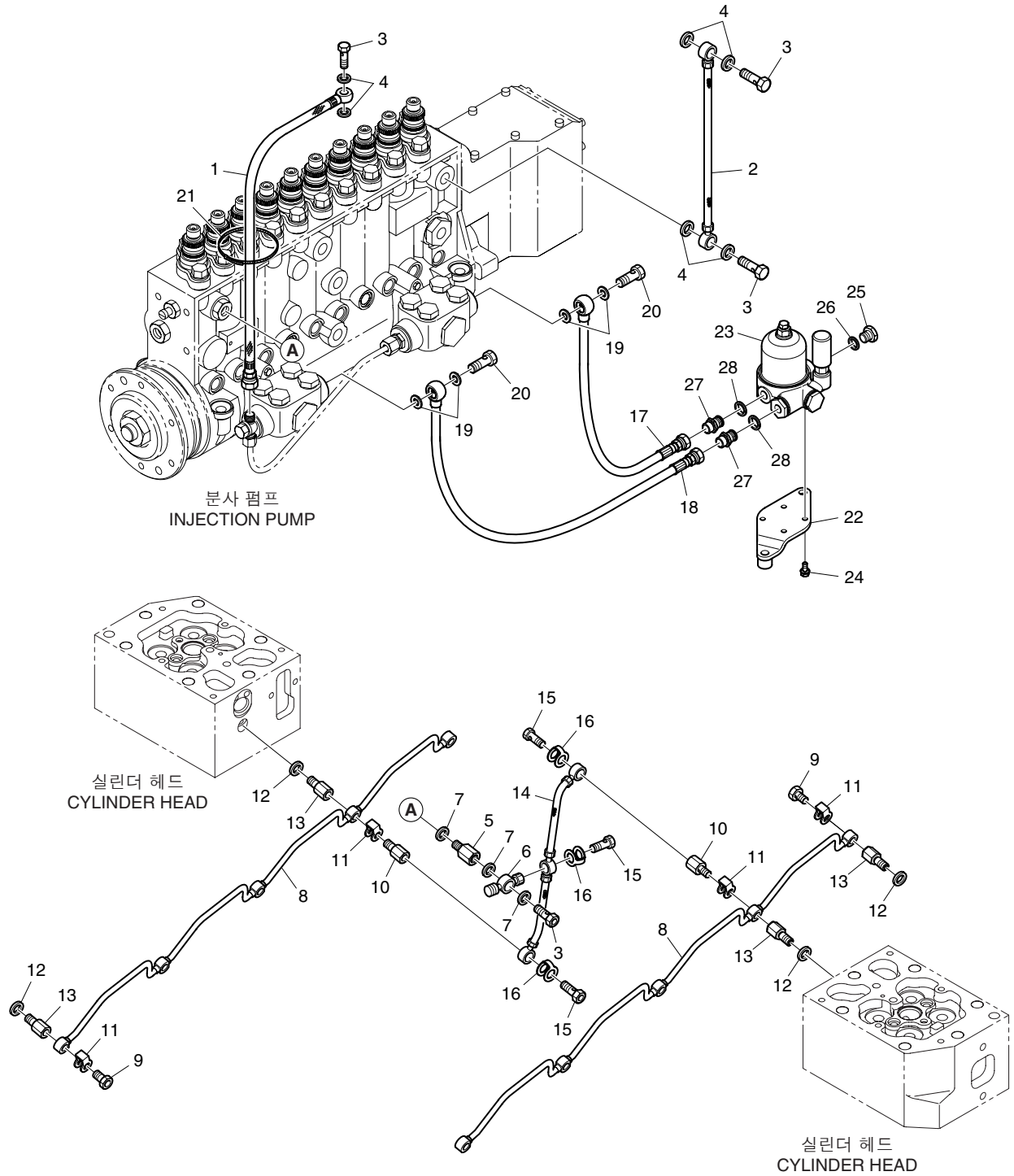
분사 펌프  
Fig.041 INJECTION PUMP(3)



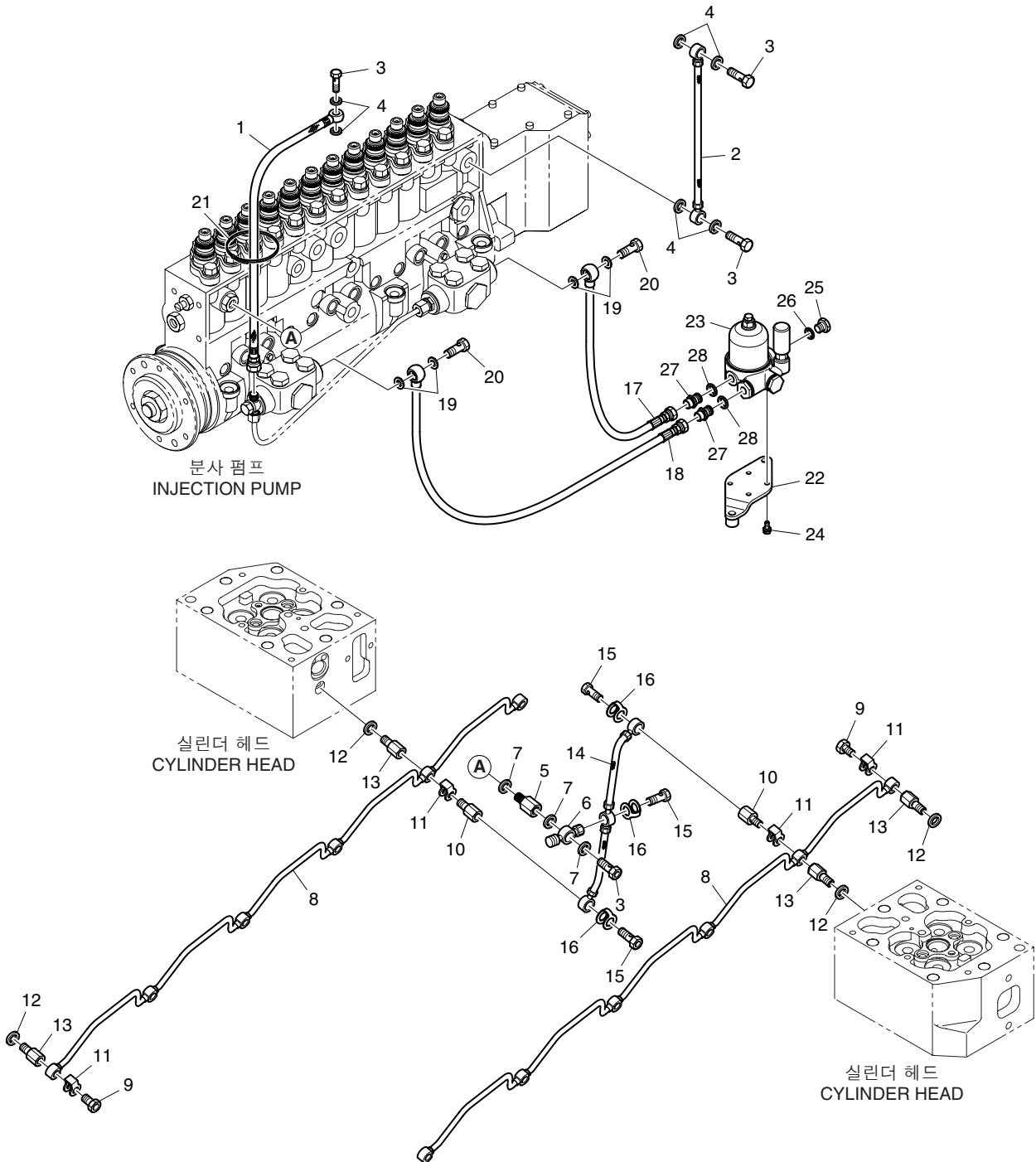
연료 파이프  
Fig.042 FUEL PIPE(1)



연료 파이프  
Fig.043 FUEL PIPE(2)



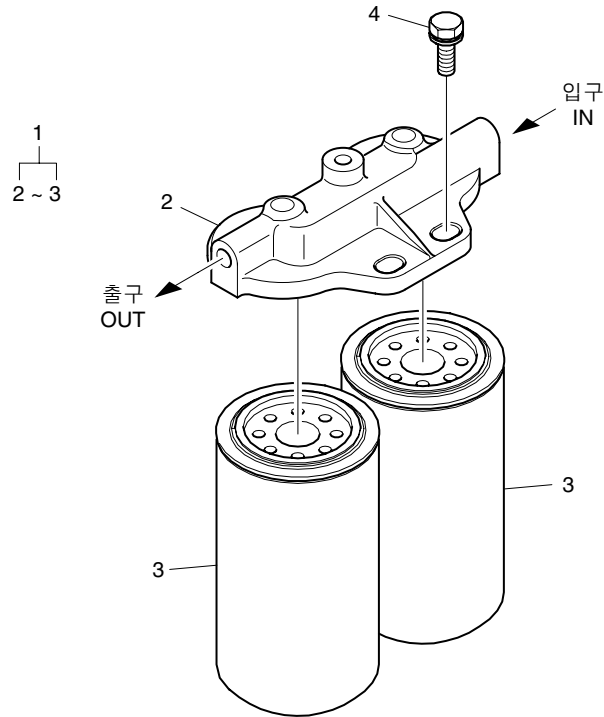
연료 파이프  
Fig.044 FUEL PIPE(3)



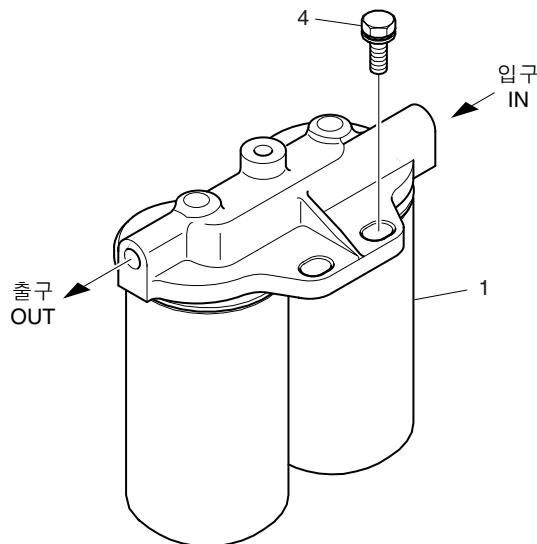


연료 여과기  
Fig.045 FUEL FILTER

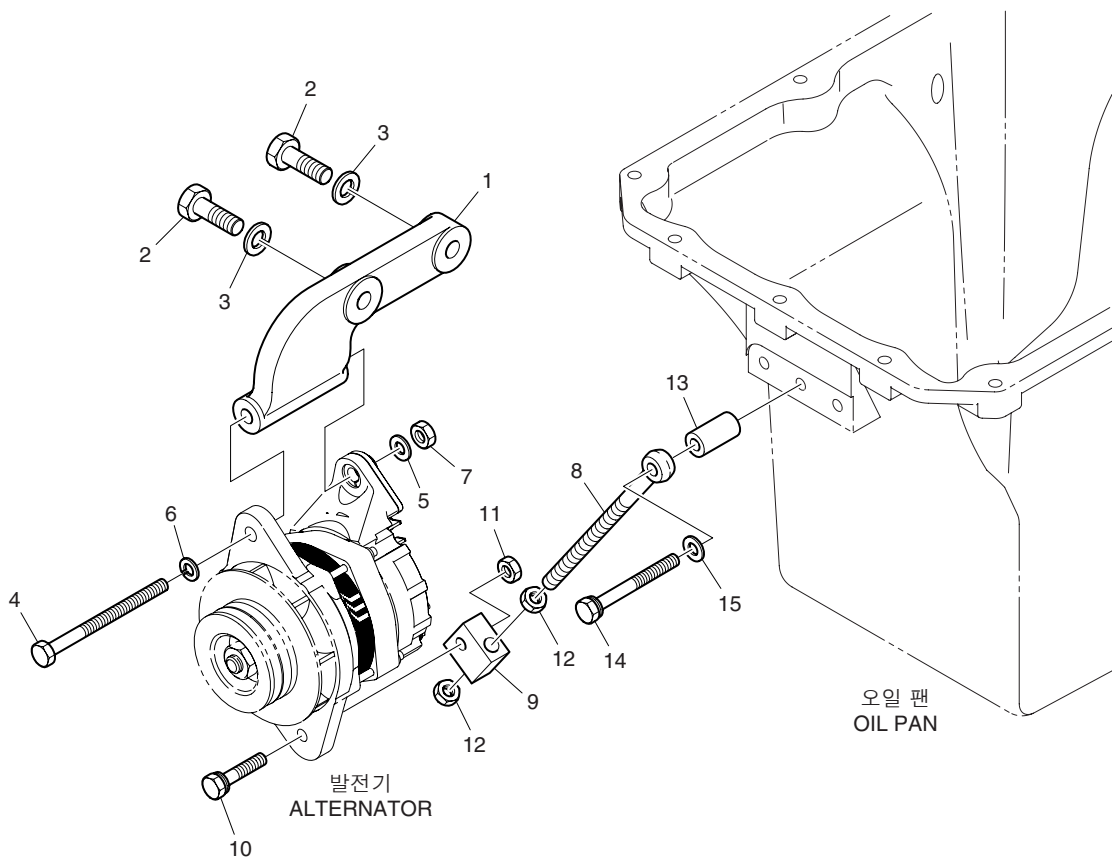
EUZOA, EUZOB, EUYOA, EUYOB, EUYOD



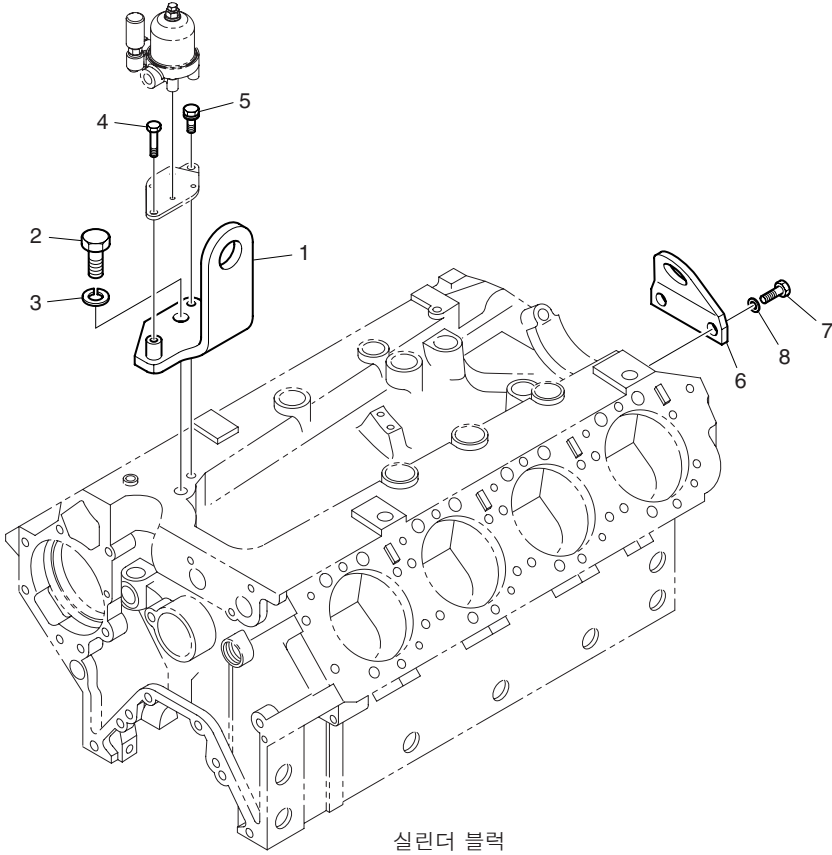
EUSOA, EUSOB



발전기 마운팅  
Fig.046 ALTERNATOR MOUNTING

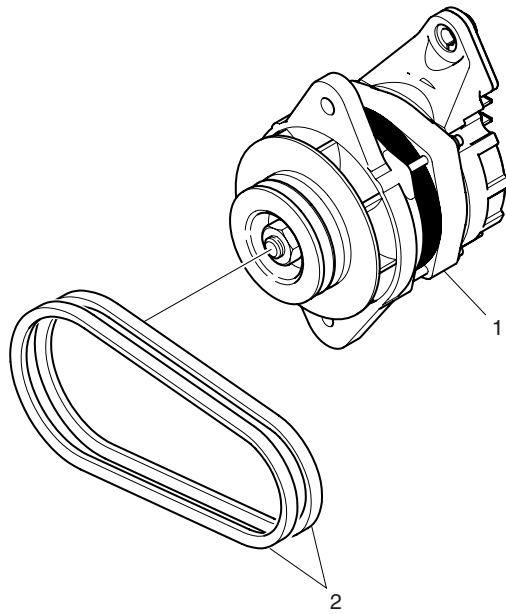


리프팅 후크  
Fig.047 LIFTING HOOK

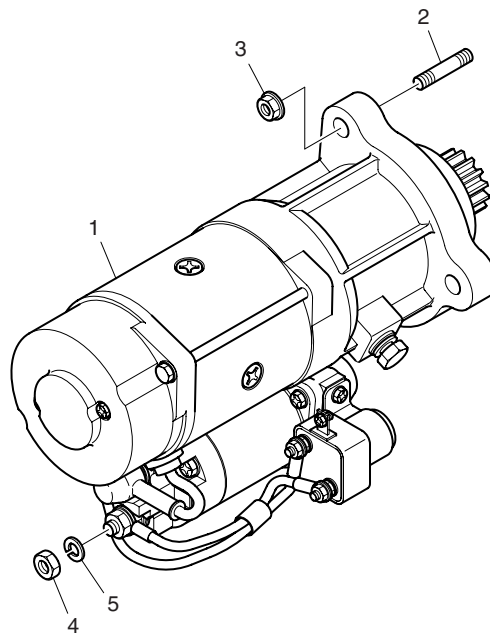


실린더 블럭  
CYLINDER BLOCK

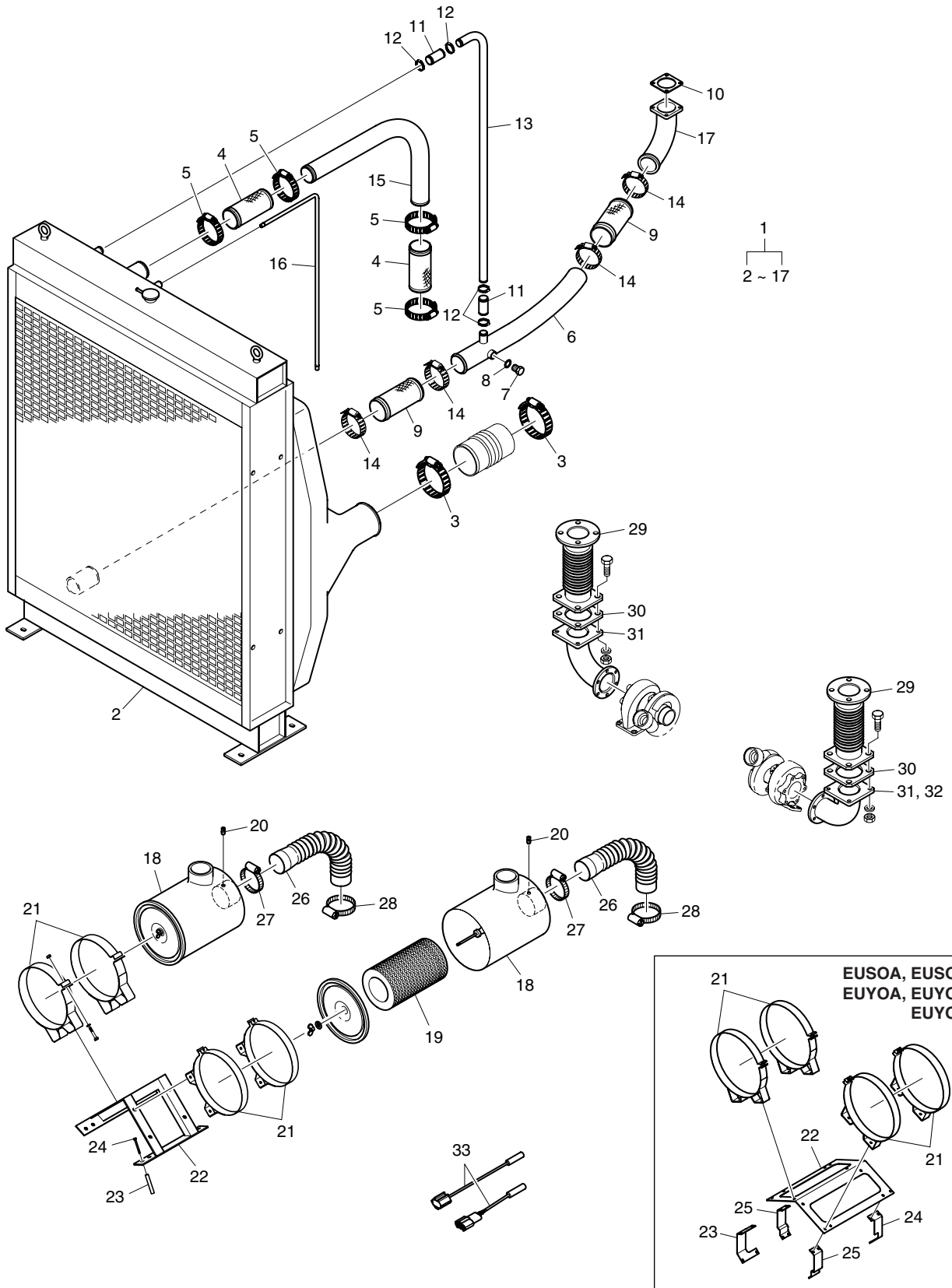
발전기  
Fig.048 ALTERNATOR



시동 전동기  
Fig.049 STARTER



부속품  
Fig.050 ACCESSORY PARTS



부속품  
Fig.050 ACCESSORY PARTS

